

LUNDINGOLD

BUILDING A LEADING GOLD COMPANY
THROUGH RESPONSIBLE MINING



2025



A decade,
thousands of stories

Los Mejores
Lugares para
Trabajar

Great
Place
To
Work.

ECUADOR
2025

A CASH FLOW AND GROWTH STORY

AUGUST 2025

TSX, Nasdaq Stockholm: **LUG** / OTCQX: **LUGDF**

www.frutadelnorte.com

www.lundingold.com

CAUTION REGARDING FORWARD LOOKING INFORMATION AND STATEMENTS



All statements, other than statements of historical fact, made and information contained in this presentation and responses to questions constitute “forward-looking information” or “forward-looking statements” as those terms are defined under Canadian securities laws (“forward-looking statements”). Forward-looking statements may be identified by terminology such “believes”, “anticipates”, “expects”, “is expected”, “scheduled”, “estimates”, “pending”, “intends”, “plans”, “forecasts”, “targets”, or “hopes”, or variations of such words and phrases or statements that certain actions, events or results “may”, “could”, “would”, “will”, “should” “might”, “will be taken”, or “occur” and similar expressions.

By their nature, forward-looking statements involve assumptions, inherent risks and uncertainties, many of which are difficult to predict, and are usually beyond the control of management, that could cause actual results to be materially different from those expressed by these forward-looking. Lundin Gold believes that the expectations reflected in these forward-looking statements are reasonable as of the date made, but no assurance can be given that these expectations will prove to be correct. In particular, this presentation contains forward-looking statements pertaining to: gold production outlook, including estimates of gold production, grades, recoveries and AISC; operating plans; expected sales receipts, cash flow and free cash flow forecasts, its estimated capital costs and sustaining capital; the Company’s declaration and payment of dividends; timing and the success of its drill program at FDN and its other exploration activities; estimates of mineral Mineral Resources and Reserves at FDN.

There can be no assurance that such statements will prove to be accurate, as Lundin Gold’s actual results and future events could

differ materially from those anticipated in this forward-looking information as a result of the factors discussed in the “Risk Factors” section in Lundin Gold’s Annual Information Form dated March 17, 2025 (the 2024 AIF), which is available at www.lundinalgold.com or on SEDAR+. Forward-looking information should not be unduly relied upon.

Except as noted, the technical information contained in this presentation relating to the Fruta Del Norte Project is based on a technical report prepared for the Company entitled “Amended NI 43-101 Technical Report, Fruta del Norte Mine, Ecuador” dated March 29, 2023 with an effective date of December 31, 2022 (the **Technical Report**), available under the Company’s profile at www.sedarplus.ca. Information of a scientific and technical nature in related to the Technical Report in this presentation was reviewed and approved by Ron Hochstein, P. Eng., Lundin Gold’s President and Chief Executive Officer, who is a Qualified Persons within the meaning of National Instrument 43-101 - Standards of Disclosure for Mineral Projects (“NI 43-101”). The technical information relating to FDN subsequent to the Technical Report contained in this presentation has been reviewed and approved by Terry Smith P. Eng, Lundin Gold’s Chief Operating Officer, who is a Qualified Person in accordance with the requirements of NI 43-101. The disclosure of exploration information contained in this presentation was prepared by Andre Oliveira P. Geo, Lundin Gold’s V.P. Exploration, who is a Qualified Person in accordance with the requirements of NI 43-101.

Unless otherwise indicated, all dollar values herein are in US dollars.

Important Information for US Investors

This presentation may use the terms “measured”, “indicated”, “inferred” and “historical” mineral resources. U.S. investors are advised that, while such terms are recognized and required by Canadian regulations, the Securities and Exchange Commission does not recognize them. “Inferred mineral resources” and “historical estimates” have a great amount of uncertainty as to their existence and great uncertainty as to their economic feasibility. It cannot be assumed that all or any part of an inferred mineral resource or a historical estimate will ever be upgraded to a higher category. Under Canadian rules, estimates of inferred mineral resources may not form the basis of feasibility or other economic studies. Further, historical estimates are not recognized under Canada’s NI 43-101. U.S. investors are cautioned not to assume that all or any part of measured or indicated mineral resources will ever be converted to mineral reserves.

This presentation is not an offer of securities for sale in the United States or in any other jurisdiction. The Company’s securities have not been and will not be registered under the United States *Securities Act of 1933*, as amended, and may not be offered or sold within the United States absent registration or an application exemption from registration.



FRUTA DEL NORTE

THE FIRST LARGE-SCALE GOLD MINE IN ECUADOR



Location:
**Zamora Chinchipe Province,
Southeast Ecuador**



Ownership:
100%



Stage:
Producing



Mine Type:
Underground



Life of Mine:
~12 Years



Current
Reserves:
**5.54 M Oz Au
Avg Grade
7.81 g/t¹**



Current M&I
Resources:
**7.06 M Oz Au
Avg Grade
7.17 g/t¹**



Current Inferred
Resources:
**2.36 M Oz Au
Avg Grade
5.27 g/t¹**



**On track to meet 2025 guidance
with strong start to the year**

Q2 2025

139,433 oz
Gold produced

10.4 g/t
Average Head Grade

90.9%
Average recovery

5,064 tpd
Average Mill Throughput

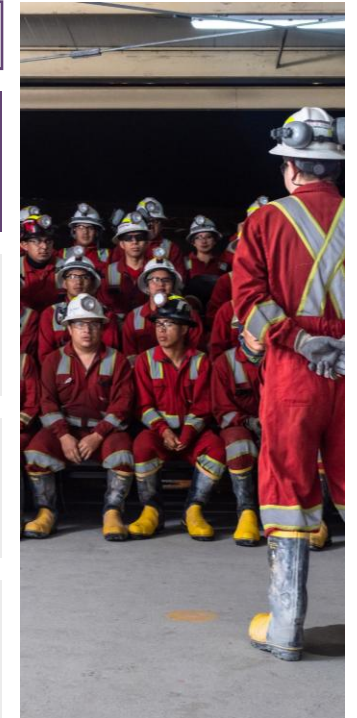
H1 2025

256,746 oz
Gold produced

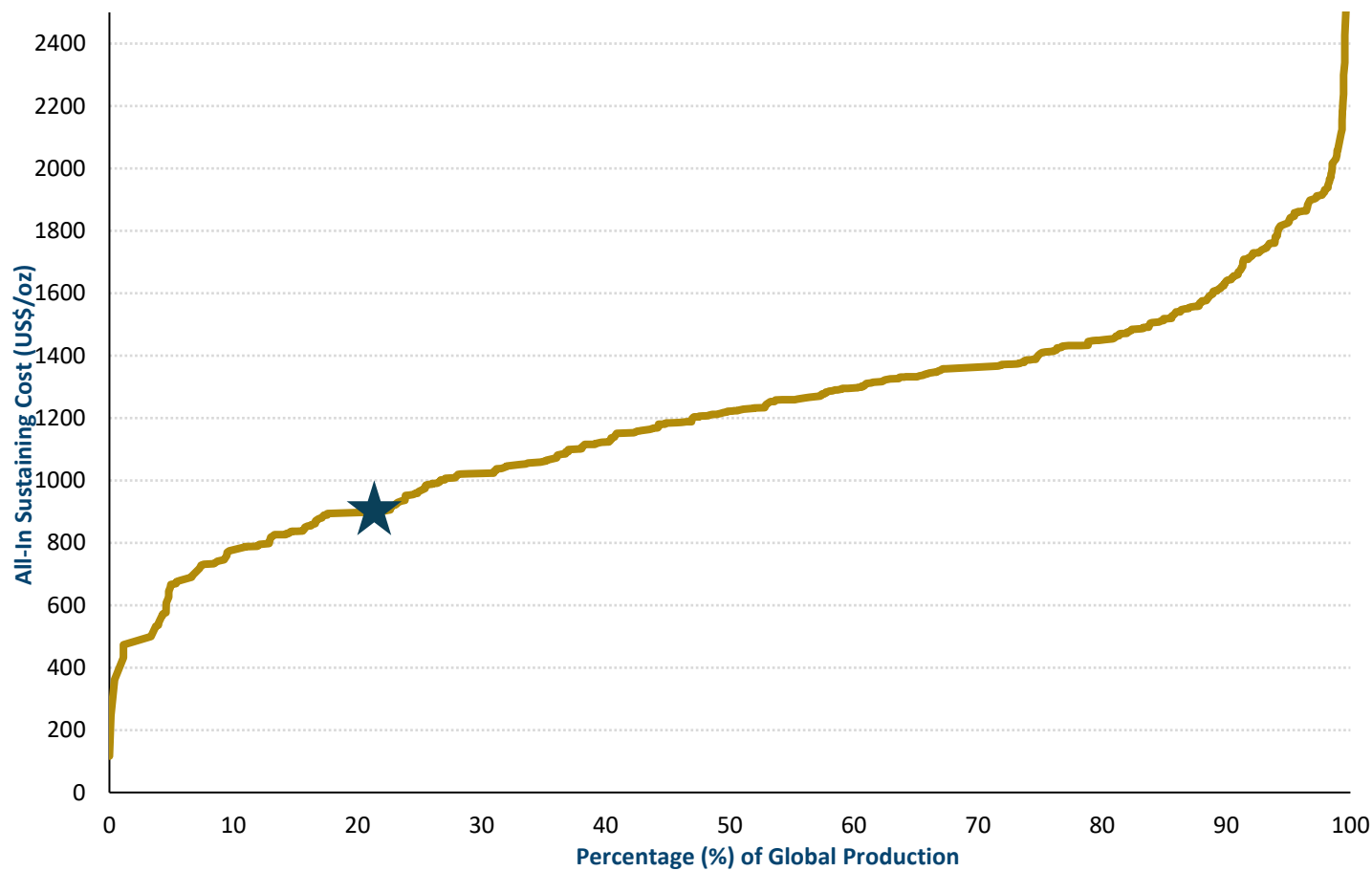
10.4 g/t
Average Head Grade

89.8%
Average recovery

4,745 tpd
Average Mill Throughput



ONE OF THE LOWEST COST GOLD MINES IN THE WORLD



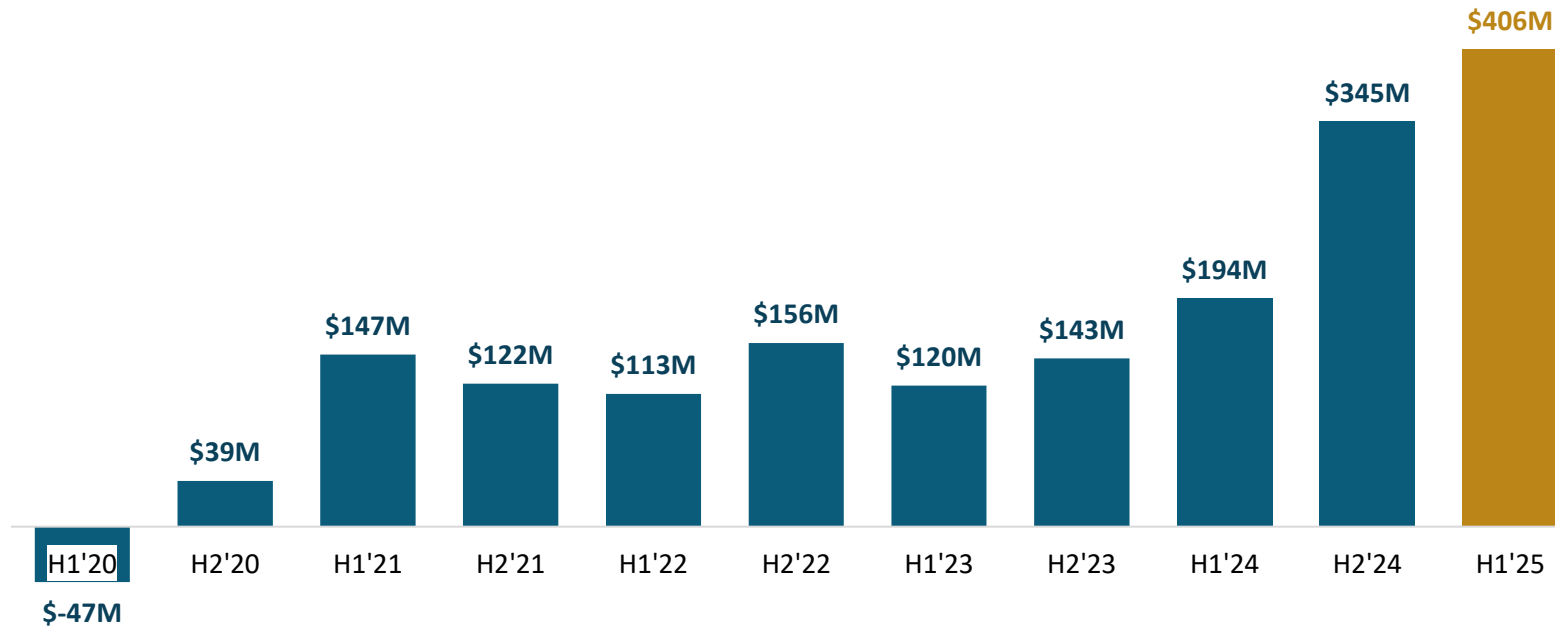
Source: SNL Metals and Mining, public company filings estimated for the year 2025.
1. Please refer to page 12 in the Company's MD&A for the 6 months ended June 30, 2025 for an explanation of non-IFRS measures used

AISC ¹	Q2 2025	H1 2025
Cash operating costs ¹	\$756	\$773
Corporate social responsibility	\$4	\$4
Treatment and refining charges	\$88	\$87
Accretion of restoration provision	\$1	\$1
Sustaining capital	\$116	\$90
Silver by product credit	(\$39)	(\$37)
AISC per oz sold	\$927	\$918
2025 AISC Guidance	\$935-995	

GENERATING SIGNIFICANT FREE CASH FLOW



Historic Free Cash Flow¹ Generation (US\$M)



1. Free cash flow is reported by Lundin Gold as cash flow provided by operating activities, less cash used for investing activities and interest and normal course finance charge paid. Please refer to page 12 in the Company's MD&A for the 6 months ended June 30, 2025 for an explanation of non-IFRS measures used



QUARTERLY FIXED DIVIDEND COMPLEMENTED BY VARIABLE DIVIDEND

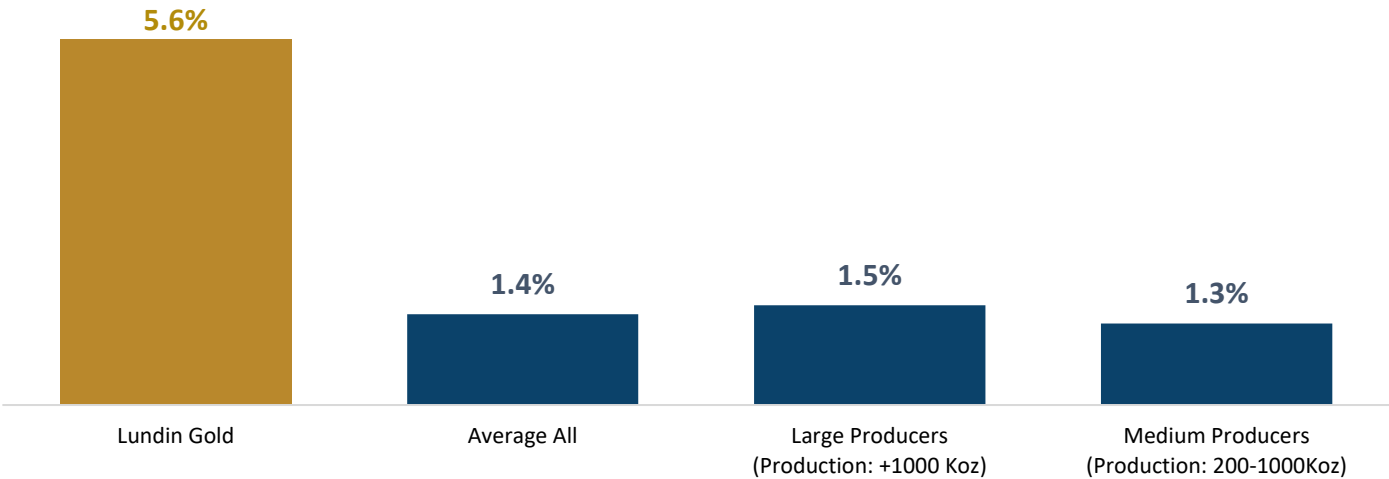
FIXED DIVIDEND

\$0.30 per share quarterly
\$1.20/sh = ~\$300M annually

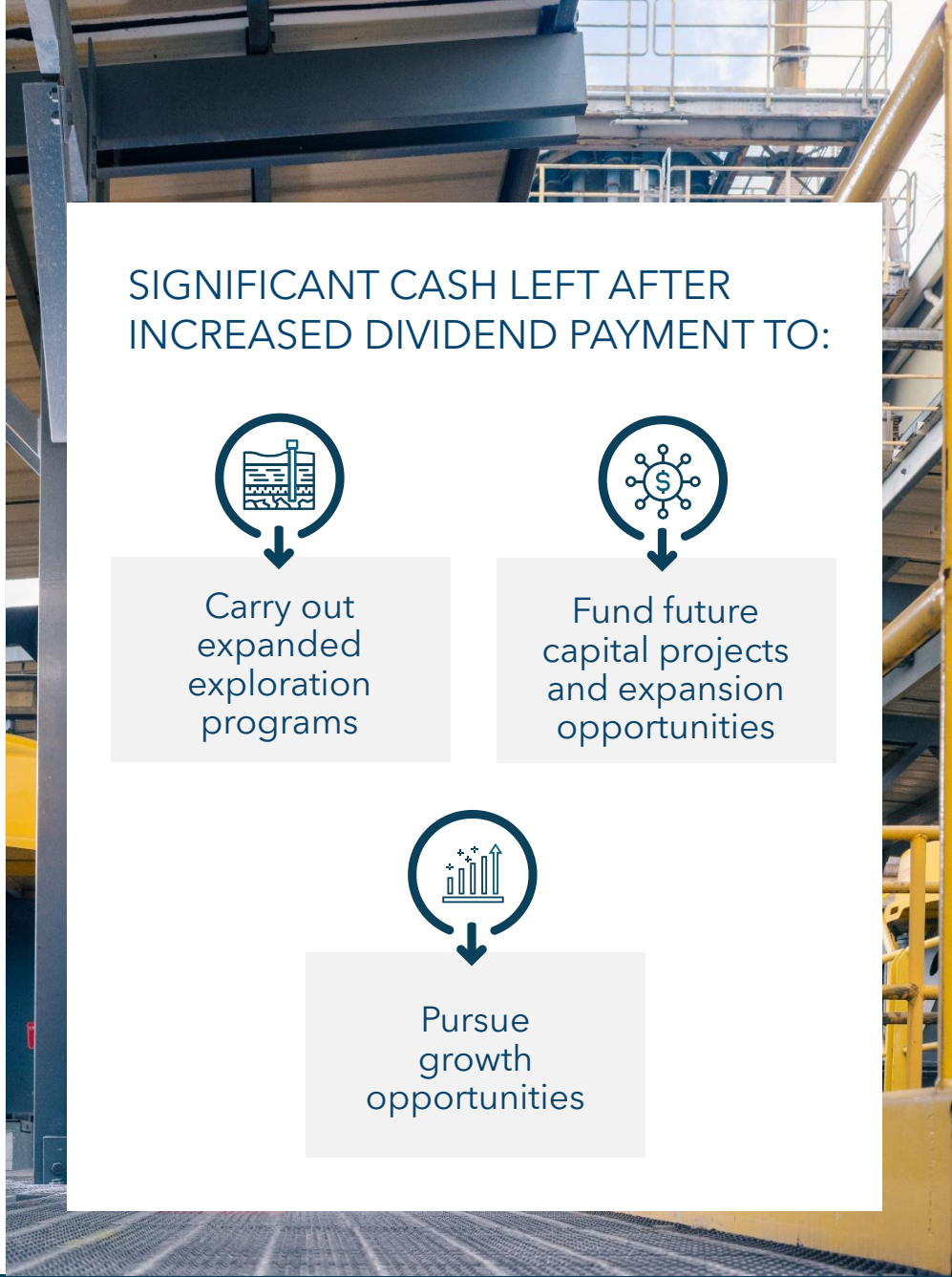
VARIABLE DIVIDEND

\$0.49 per share (Q3 2025)
Linked to free cash flow generation with minimum 50% to be paid out, after fixed dividend and normalization¹.

Gold Mining Industry Average Dividend Yields %²



Source: Factset, share price as at August 11, 2025.



LUNDINGOLD



BUILDING A LEADING GOLD COMPANY THROUGH RESPONSIBLE MINING

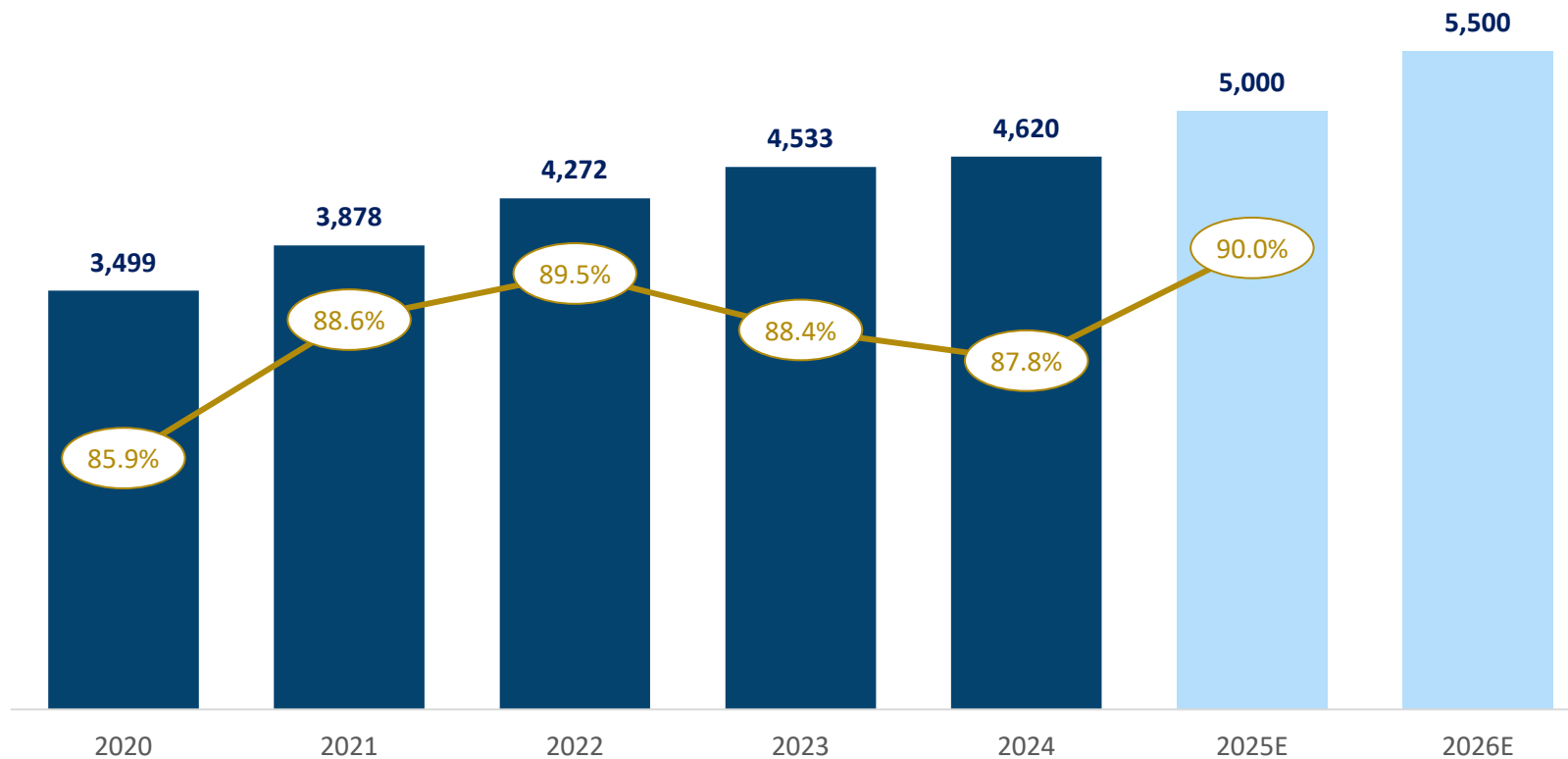
DELIVERING FUTURE VALUE AT LUNDIN GOLD



EXPANSION PROJECT COMPLETE IMPROVES THROUGHPUT AND RECOVERIES



Average Annual Plant Throughput (tpd) and Recovery (%)



FOCUS OF EXPANSION
to 5,000 tpd:

Tailings & Water Reclaim

Ultrafine Flotation

3rd Concentrate Filter

Plant Automation

FOCUS OF EXPANSION
to 5,500 tpd:

Further Debottlenecking



3 YEAR GUIDANCE

ANTICIPATED INCREASE TO THROUGHPUT IN 2026



2025	2026	2027
490,000 - 525,000³ Gold Production (oz)	475,000 - 525,000 Gold Production (oz)	475,000 - 525,000 Gold Production (oz)
5,000 Milled Throughput (tpd)	5,500 Milled Throughput (tpd)	5,500 Milled Throughput (tpd)
75 - 85 Sustaining Capital (\$ million)	75 - 90 Sustaining Capital (\$ million)	70 - 85 Sustaining Capital (\$ million)
730 - 790 Cash Cost (\$/oz sold) ^{1,2}	750 - 810 Cash Cost (\$/oz sold) ^{1,2}	750 - 810 Cash Cost (\$/oz sold) ^{1,2}
935 - 995 AISC (\$/oz sold) ^{1,2}	950 - 1,020 AISC (\$/oz sold) ^{1,2}	925 - 995 AISC (\$/oz sold) ^{1,2}

1. Please refer to pages 12 to 15 in the Company's MD&A for the 6 months ended June 30, 2025 for an explanation of non-IFRS measures used

2. Gold/silver price per oz assumptions are \$2,500/\$31.00, respectively

3. On August 7th, 2025 the Company elevated the lower end of its 2025 production guidance from 475,000 to 490,000 oz while maintaining the upper end at 525,000 oz.

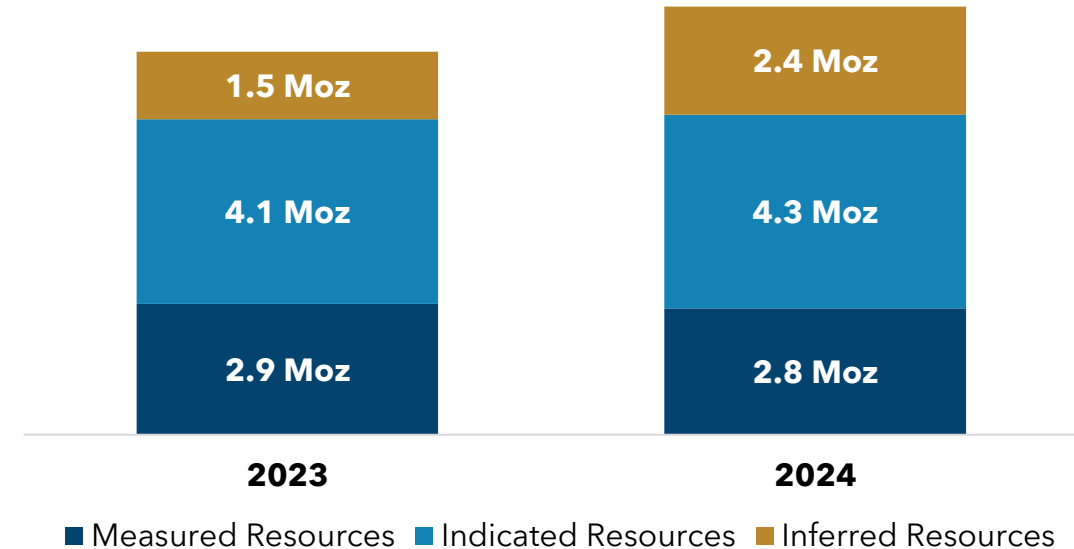


LARGEST RESERVE AND RESOURCE STATEMENT EVER PUBLISHED AT FDN

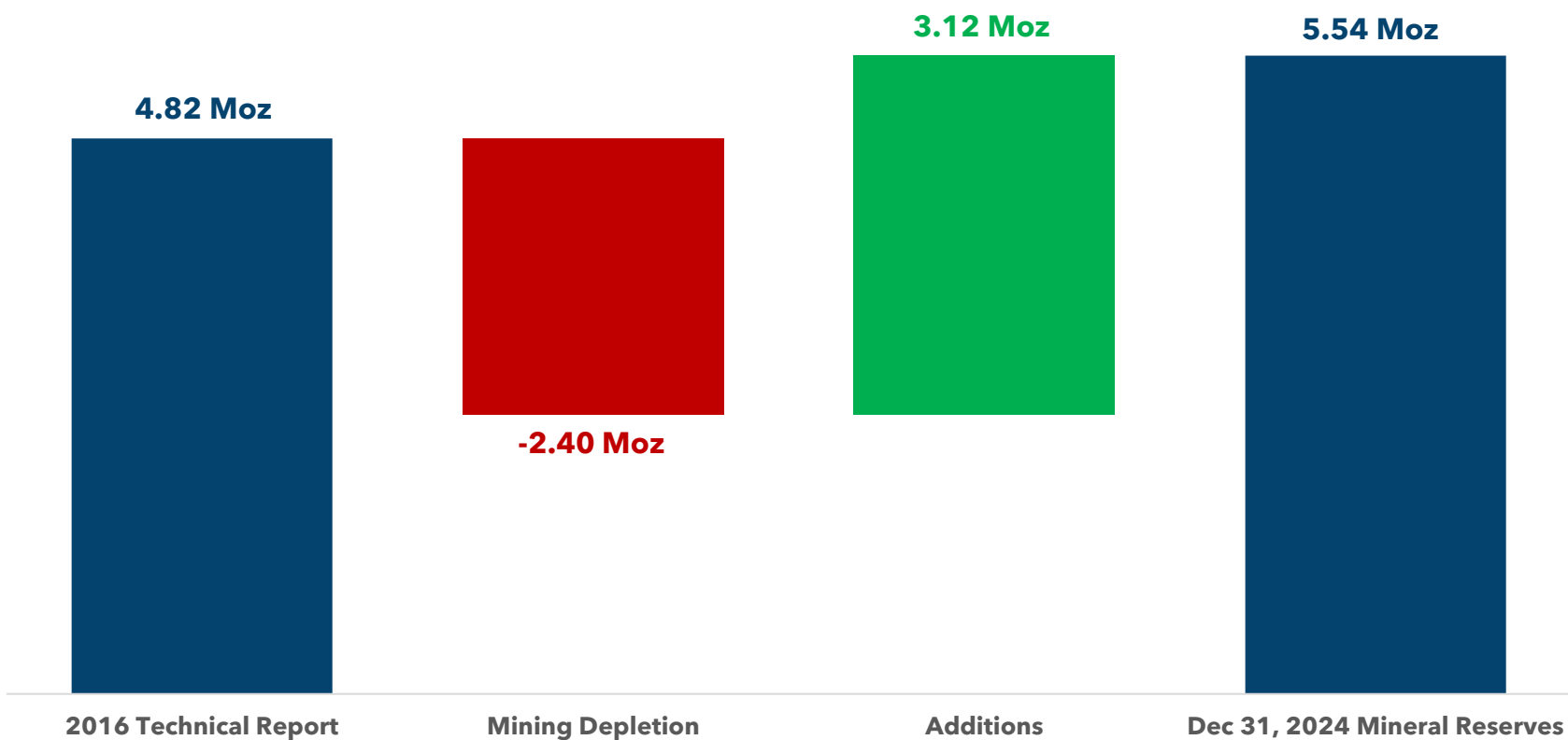


Based on contained gold ounces the 2024 estimates are the highest ever published at FDN for Mineral Reserves and Resources.

- **Proven and Probable Mineral Reserves** increased to 5.54 Moz of contained gold from 22.06 metric tonnes with an average grade of 7.81 g/t, after 2024 mining depletion of 0.54 Moz.
- **Measured and Indicated Mineral Resources** increased to 7.06 Moz of contained gold from 30.62 metric tonnes with an average grade of 7.17 g/t.
- **Inferred Resources** increased by 59% to 2.36 Moz of contained gold consisting of 13.95 metric tonnes with an average grade of 5.27 g/t net of conversion of 0.65 Moz to Measured and Indicated.



TRACK RECORD OF MINERAL RESERVE REPLACEMENT



1. Please see the Company’s press release dated February 18, 2025 titled “Lundin Gold achieves a new high of contained gold ounces in Mineral Reserves and Mineral Resources at Fruta del Norte” for information regarding the assumptions, parameters and risks associated with the Mineral Reserve estimate



LUNDINGOLD

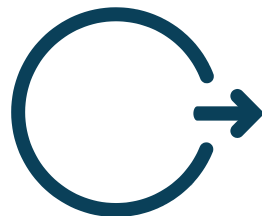
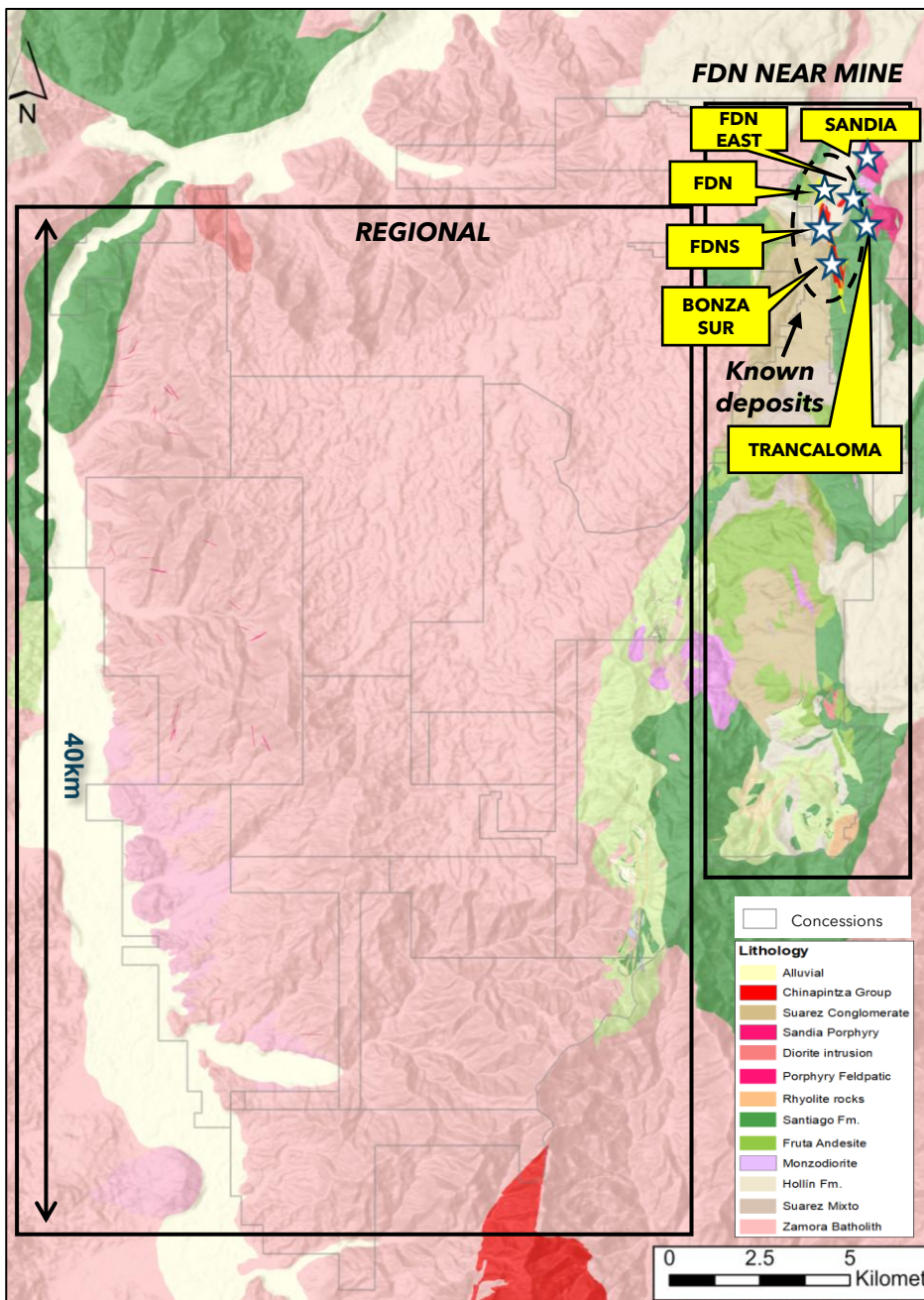


BUILDING A LEADING GOLD COMPANY THROUGH RESPONSIBLE MINING

EXPLORATION IS THE FUTURE

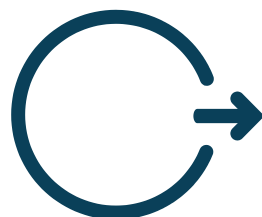


A SIMPLE APPROACH TO EXPLORATION



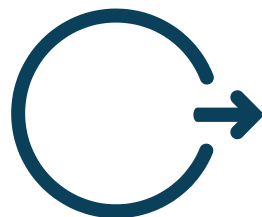
CONVERSION DRILLING

- › Replace depleted ounces and grow reserve base through conversion of inferred resources, including FDNS.



NEAR-MINE PROGRAM

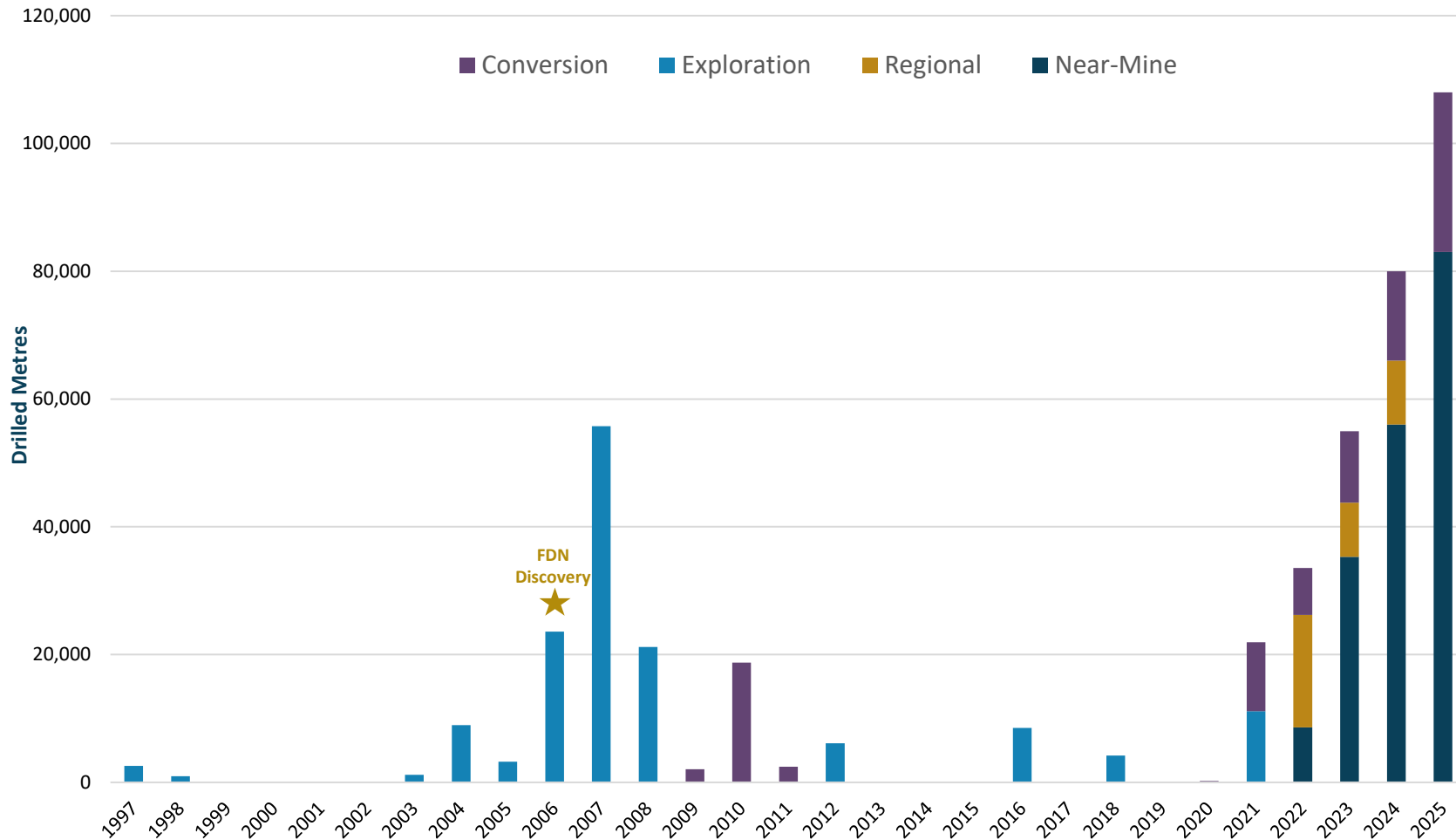
- › Grow inferred resources through extension of known deposit and identification of new targets including FDNS, FDN East, Trancaloma, Sandia, and Bonza Sur.



REGIONAL PROGRAM

- › Develop long-term gold inventory through exploration on untested sectors targeting new discoveries – looking for large epithermal systems like Fruta del Norte
- › 2025 is first year of three year program to identify new targets for drilling

2025 TO BE THE **LARGEST DRILL PROGRAM EVER** CONDUCTED ON LAND PACKAGE THAT HOSTS FDN



CONVERSION DRILLING

25,000 metres

Included in sustaining capital

NEAR-MINE EXPLORATION

83,000 metres

\$39 million budget

REGIONAL EXPLORATION

Geophysical magnetic survey and geochemical sampling program

\$8 million budget



NEAR MINE EXPLORATION

ADVANCED TARGET OVERVIEW

FDNS

- A buried epithermal vein system defined across the southern limit of FDN near FDN existing underground workings.

FDN East

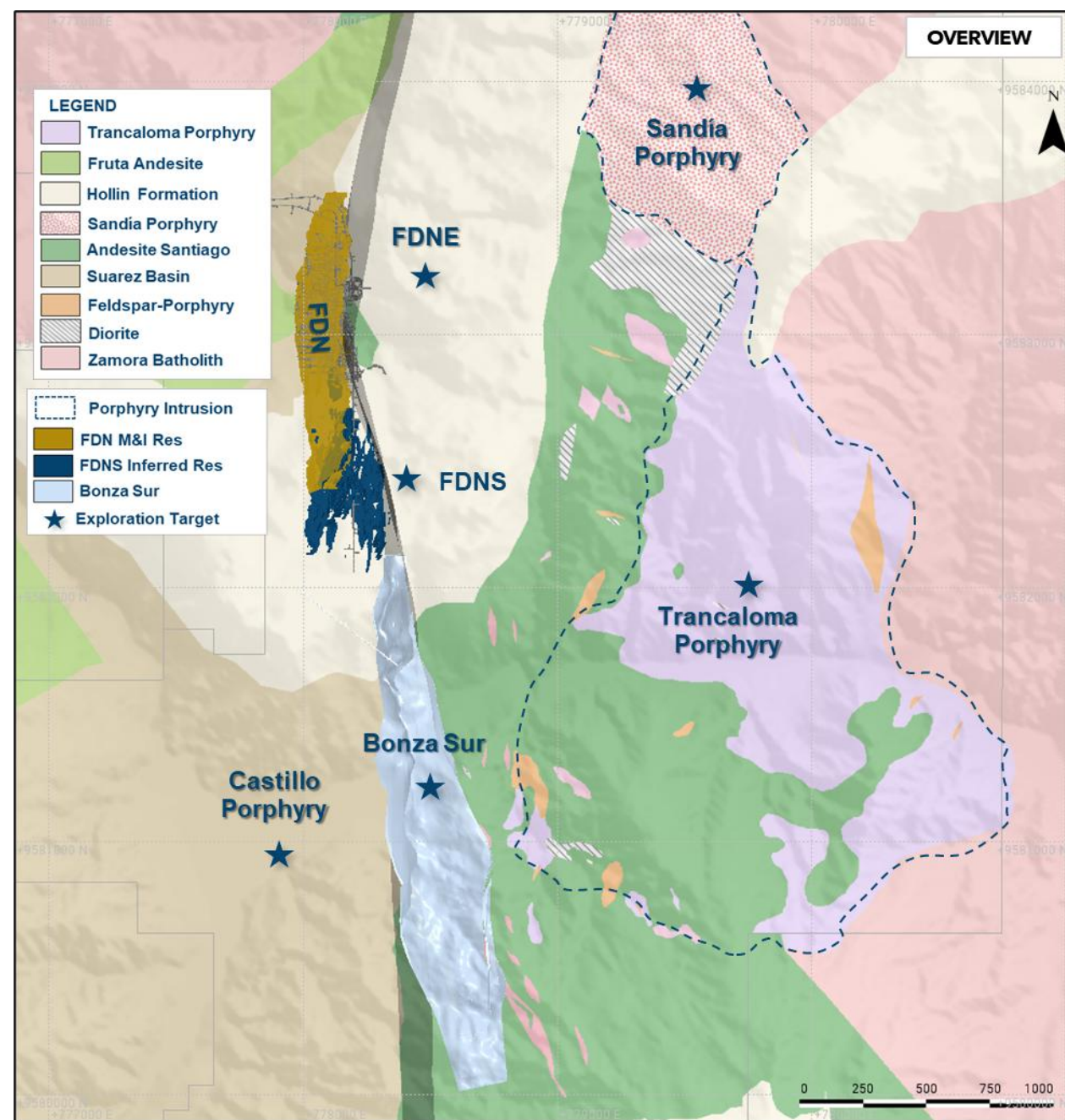
- A buried epithermal mineralized system. Mineralization of similar hydrothermal & mineralogical characteristics and hosting rocks to those found at FDN and FDNS. Located near FDN existing underground workings.

Trancaloma, Sandia, and other porphyries

- Copper-gold porphyry system confirmed at Trancaloma and Sandia.
- Both large, low-grade, hydrothermal ore deposits characterized by disseminated copper and gold mineralization from surface.

Bonza Sur

- A shallow, disseminated gold-silver epithermal system situated east of the East Fault, a critical structural control at FDN. In close proximity to Trancaloma in the east.



NEAR MINE EXPLORATION

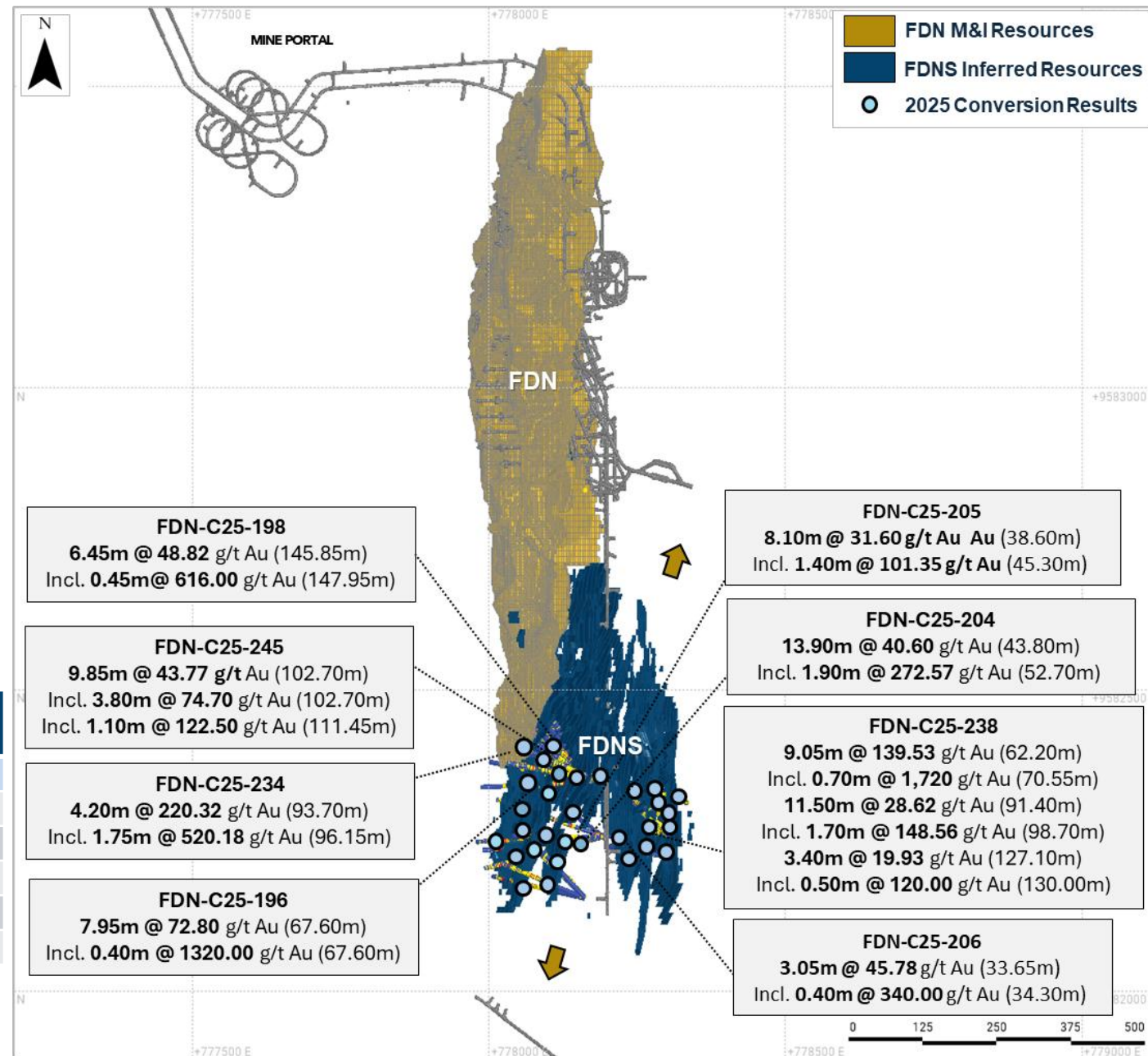
FDN SOUTH (FDNS)

- A buried epithermal vein system defined across the southern limit of FDN near FDN existing underground workings.
- Recent results have confirmed the continuity of FDNS and identified additional mineralized zones.
- Deposit remains open along the north and south.
- Engineering studies are progressing well with the objective of integrating a portion of FDNS into FDN's 2026 long-term mine plan.

FDNS 2024 Inferred Mineral Resource¹

Cut-off Grade g/t	Tonnage kt	Grade (g/t Au)	Contained Metal (k oz Au)
3.0	12,347	5.25	2,085
4.0	8,498	6.07	1,659
4.5	6,748	6.54	1,419
5.0	5,113	7.11	1,169
5.5	3,636	7.86	919
6.0	2,656	8.64	737

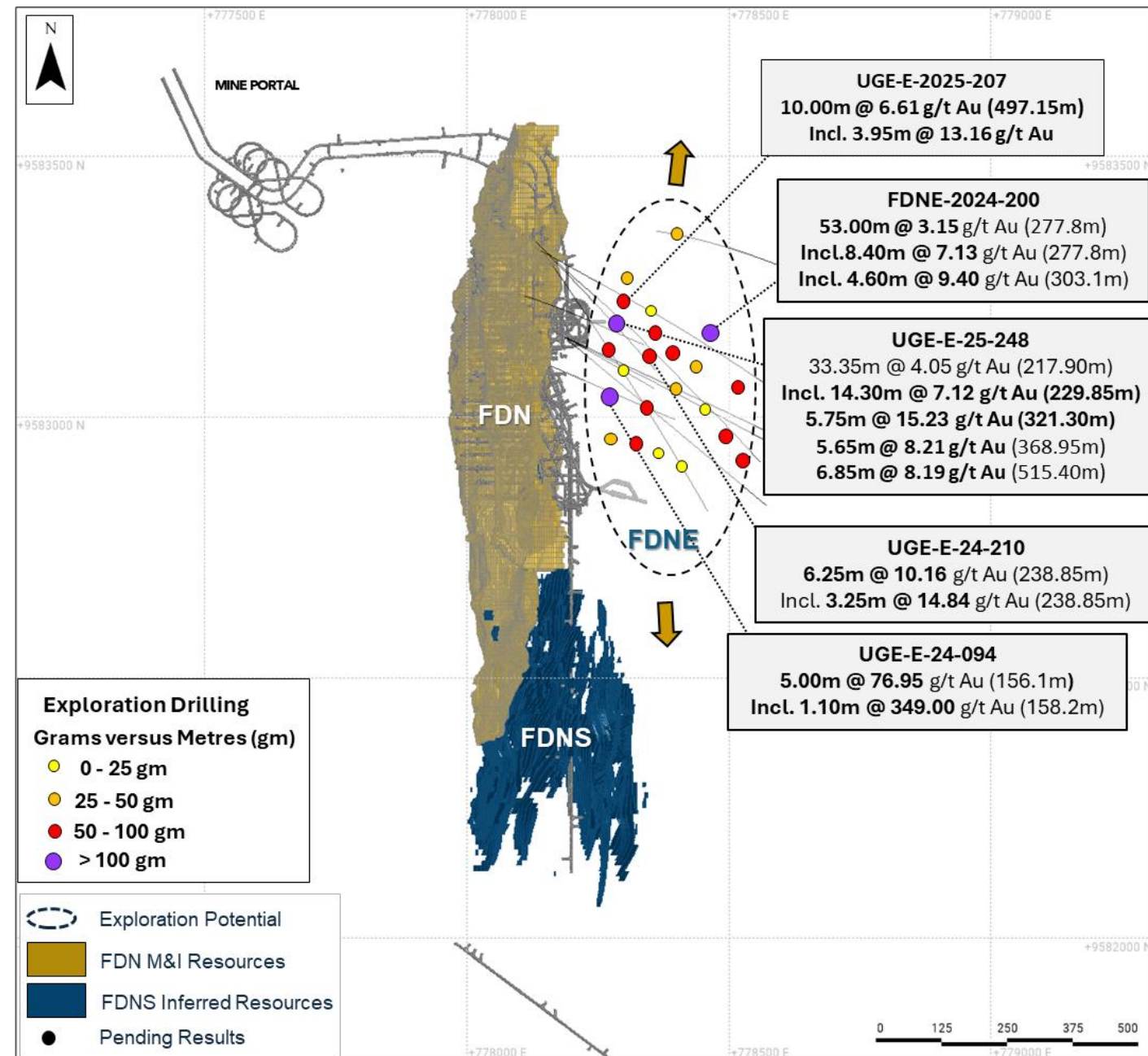
1. Effective date December 31, 2024. FDNS Inferred Mineral Resource Statement used the cut-off grade of 3.0 g/t. All other cut-off grades to highlight sensitivity are provided for information only. See Lundin Gold's 2024 AIF.



NEAR MINE EXPLORATION

FDN EAST

- Buried epithermal mineralized system located only 100 metres east of FDN.
- Similar characteristics and host rocks to FDN and FDNS.
- Drilling results confirmed continuity of the mineralization and indicate areas for further expansion.
- Deposit remains open along the north and south.
- Potential trend toward FDNS, requires further drilling.



NEAR MINE EXPLORATION EMERGING PORPHYRY CORRIDOR

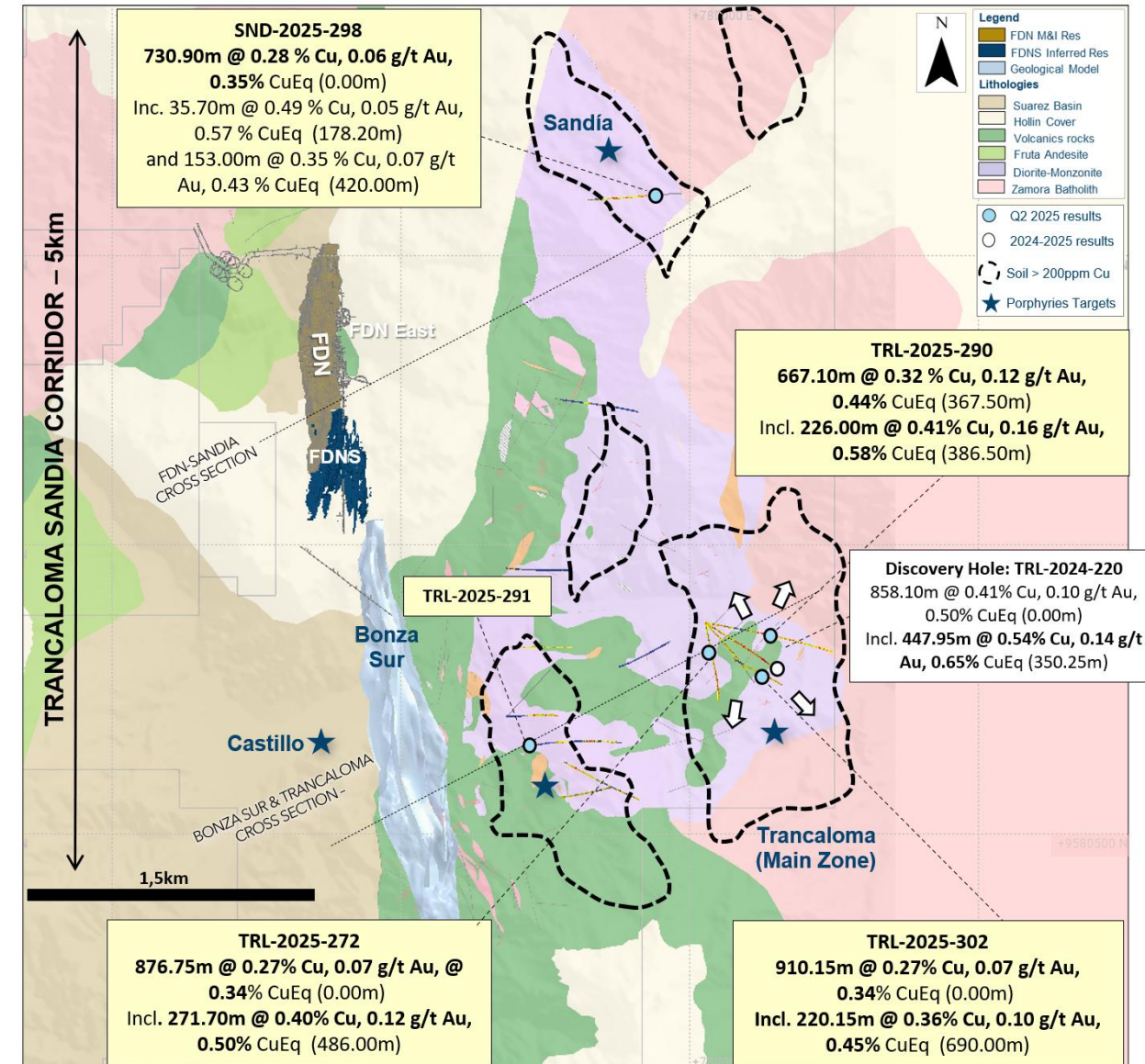
With the discovery of two copper-gold porphyry systems, a highly prospective near mine corridor adjacent to the epithermal gold deposits has emerged.

Trancaloma

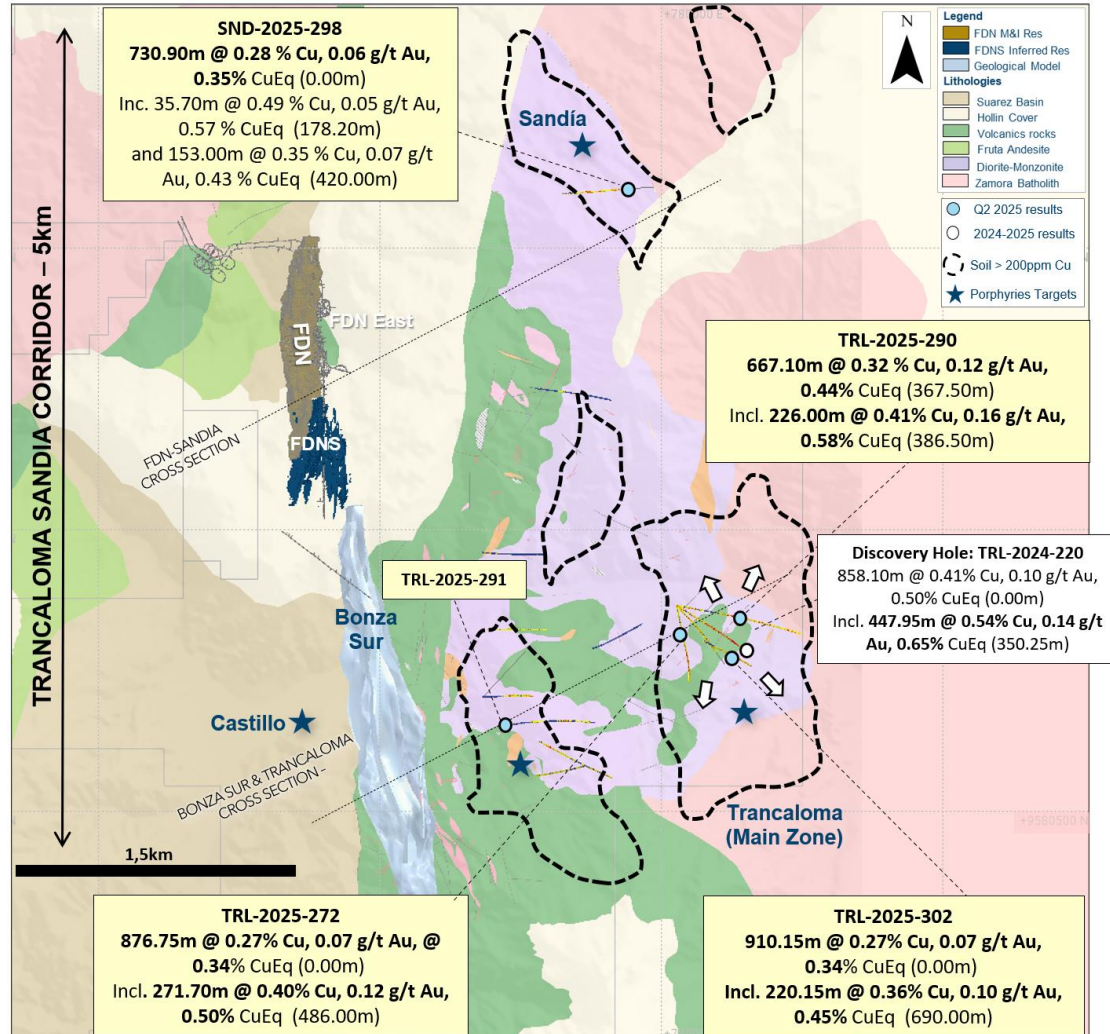
- Results confirmed the lateral and vertical continuity of the Trancaloma system, extended the main mineralized zone, and provided areas for further expansion.

Sandia

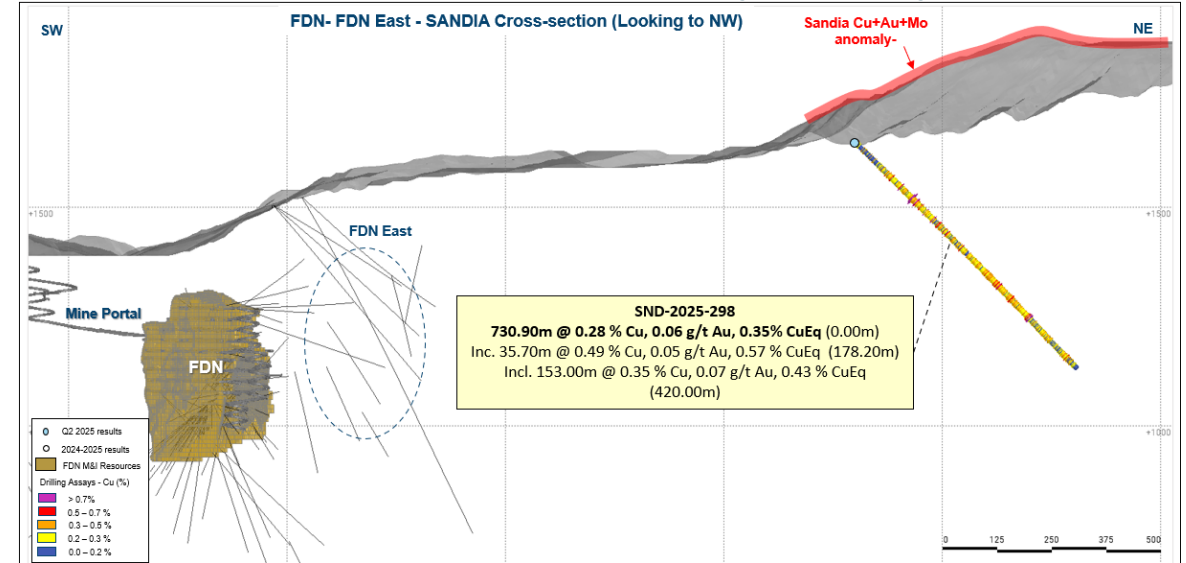
- Located less than two kms east of FDN and four kms north of Trancaloma, the Sandia target was tested by a drill hole that successfully intercepted shallow copper-gold mineralization from surface.



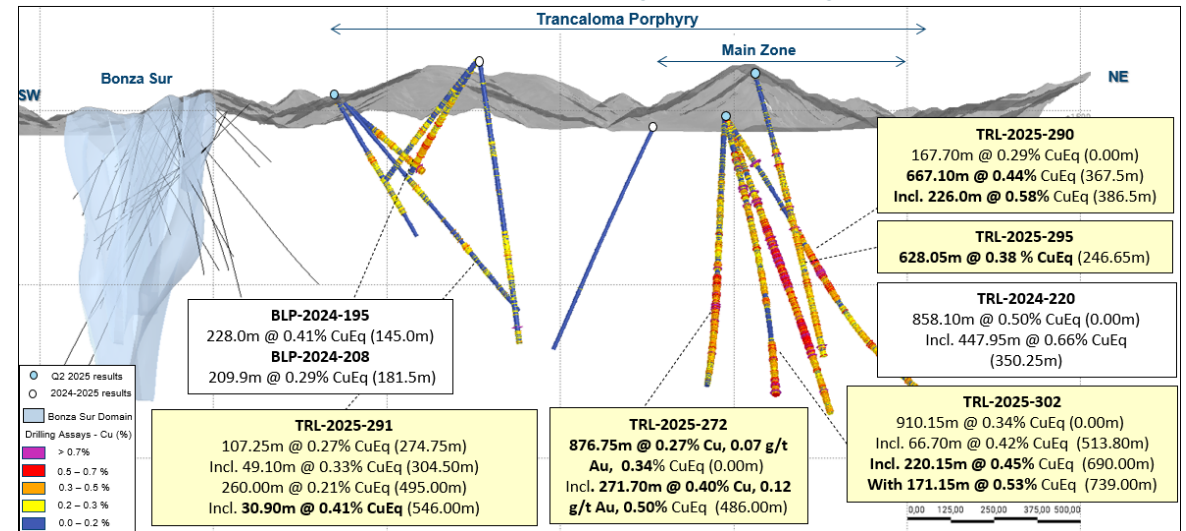
NEAR MINE EXPLORATION EMERGING PORPHYRY CORRIDOR



FDN - FDN East and Sandia section showing initial drilling results



Bonza Sur Trancaloma cross section showing recent drilling results at Trancaloma



CORPORATE STRUCTURE

(DATA AS AT AUGUST 12, 2025)



CAPITAL MARKETS DATA

Symbol	TSX: LUG / OMX: LUG / OTCQX: LUGDF	Market Capitalization (CAD)	\$18,686 M
Share price (CAD/sh)	\$79.69		
52 Week Trading Range (CAD/sh)	\$22.76 – 83.78		
Shares Outstanding	241.3 M		

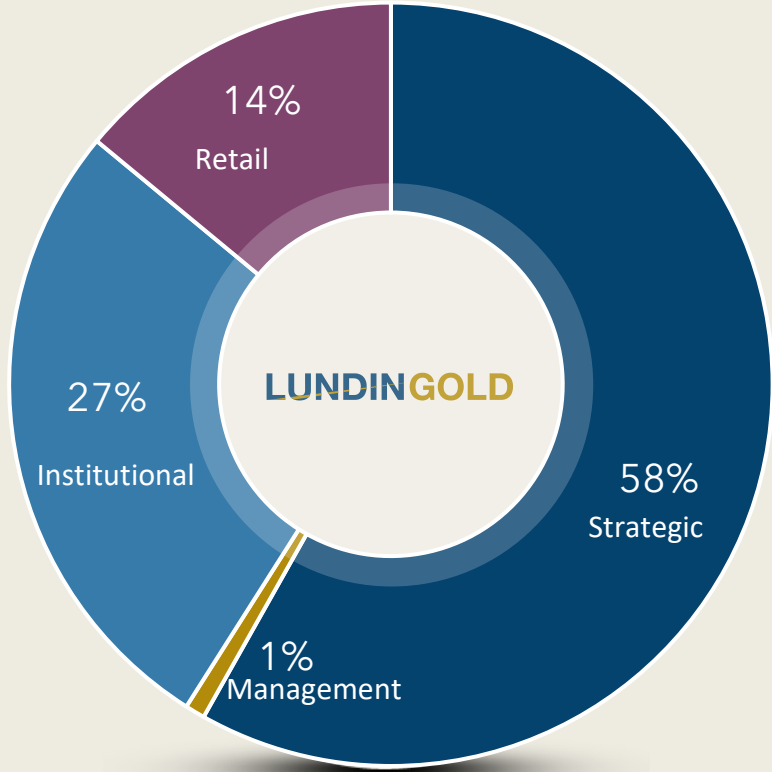


ANALYST COVERAGE (CAD unless otherwise stated)

BMO Capital Markets	Hold, \$74.00	National Bank of Canada	Hold, \$85.00
Canaccord Genuity	Hold, \$60.00	Raymond James	Hold, \$53.00
CIBC World Markets	Hold, \$85.00	RBC	Hold, \$61.00
Cormark Securities	Hold, \$80.00	Pareto Securities	Hold, SEK 443 / \$63.17
Desjardins Securities	Hold, \$70.00	Scotiabank	Hold, \$50.00
Jefferies	Hold, \$62.00	TD Cowen	Hold, \$76.00



SHAREHOLDERS



STRONGLY POSITIONED TO CREATE SHAREHOLDER VALUE



Operational Excellence

Focus on continued optimization of operations

Throughput increased to 5,000 tpd for 2025 and 5,500 tpd for 2026



Cash Flow

Capturing significant gold price margin

Quarterly fixed dividend of US\$0.30 and variable dividend linked to free cash flow



Growth

3.12 Moz added to Reserves since operations at FDN began

2025 drill program increased to minimum of 108k metres



ESG

A leader in responsible mining (2024 #1 ESG Mining Journal)

Key to our continued success

LUNDINGOLD

BUILDING A LEADING GOLD COMPANY
THROUGH RESPONSIBLE MINING

APPENDIX



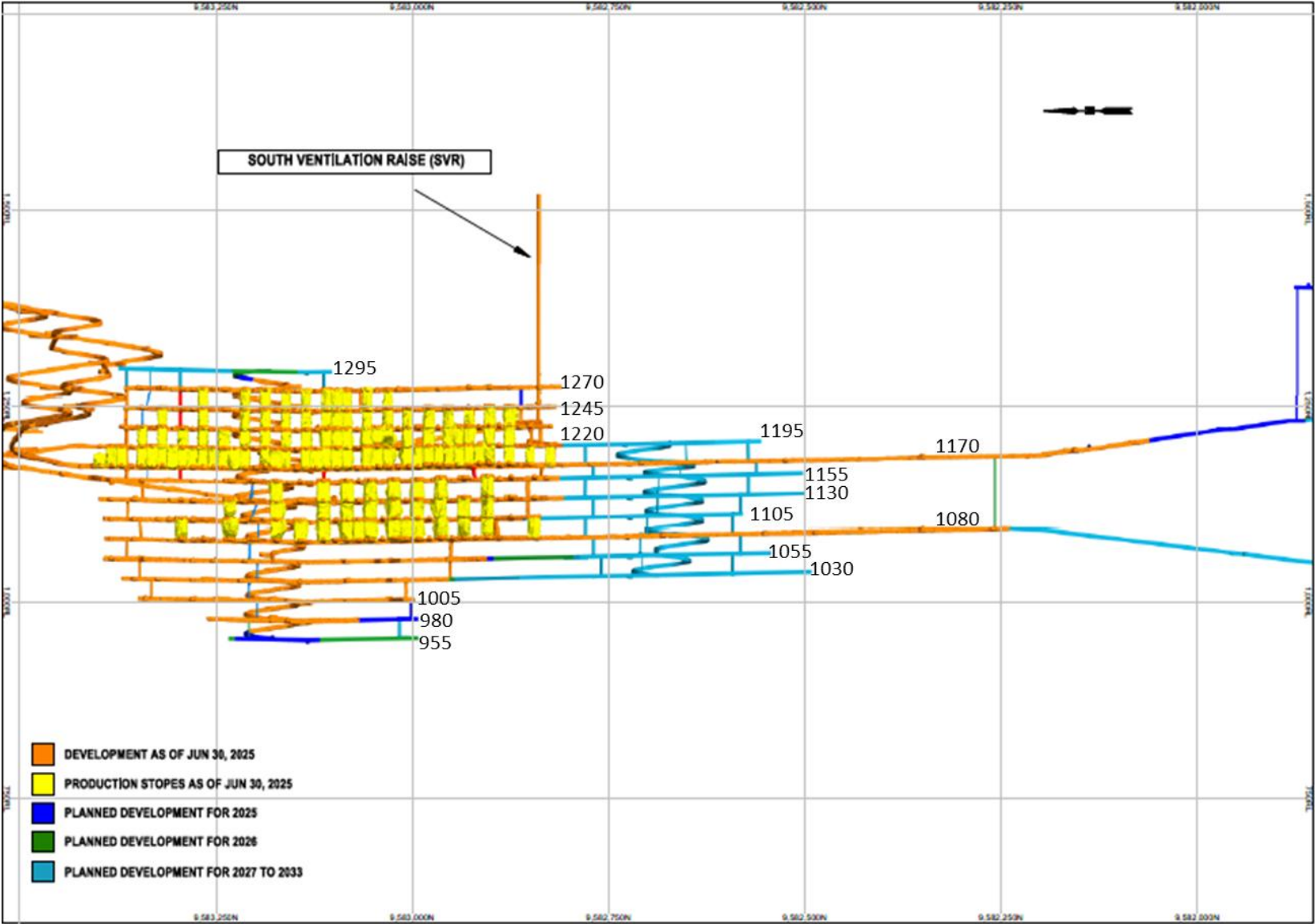
Great Place To Work®
Certified
MAR 2024-MAR 2025
ECUADOR™



TSX, Nasdaq Stockholm: LUG / OTCQX: LUGDF



MINE SUMMARY





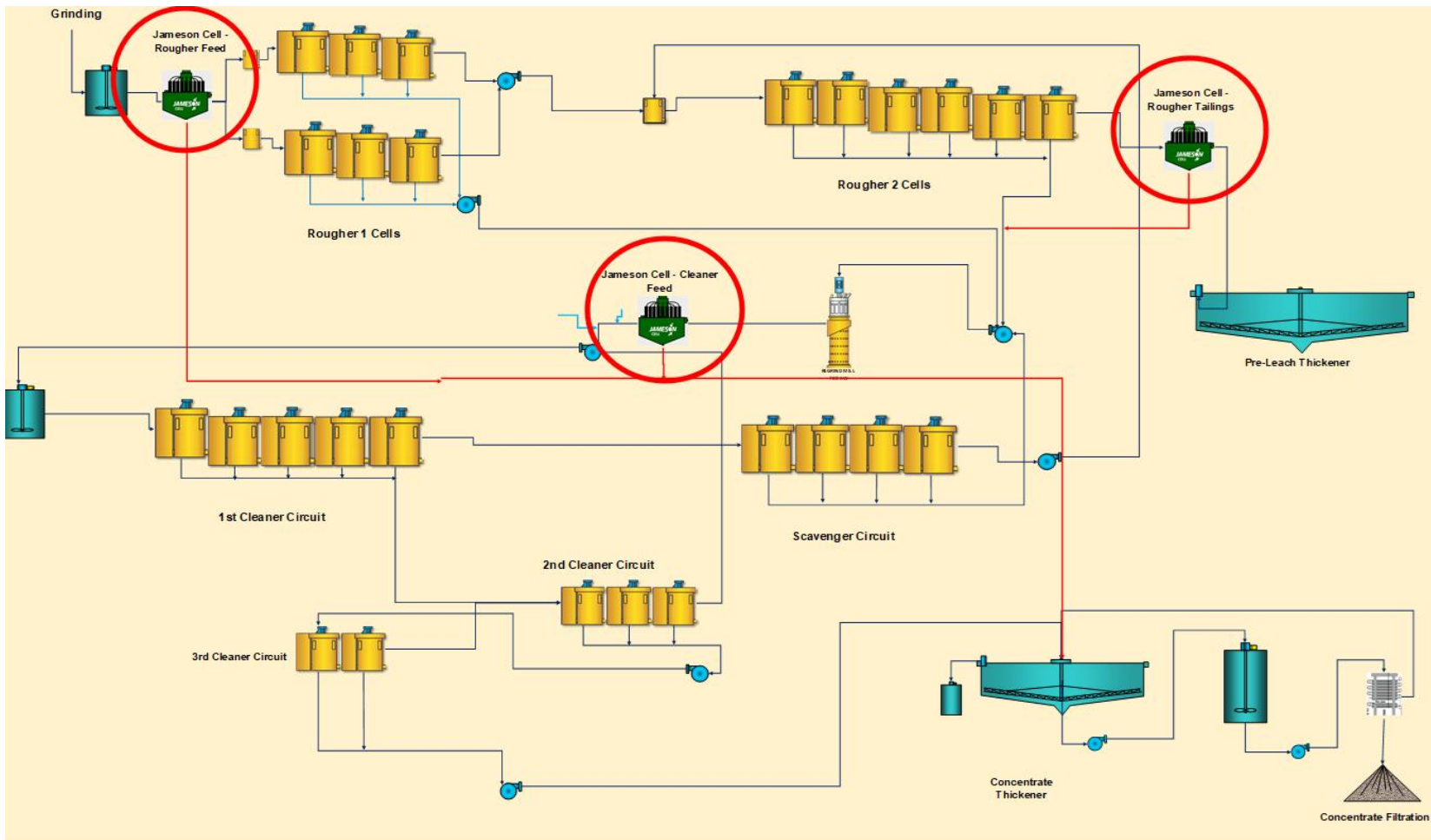
Los Mejores Lugares para Trabajar™

Great Place To Work. ECUADOR 2023



PLANT EXPANSION PROJECT

JAMESON CELL AREA



Jameson Cell Additions to Flowsheet

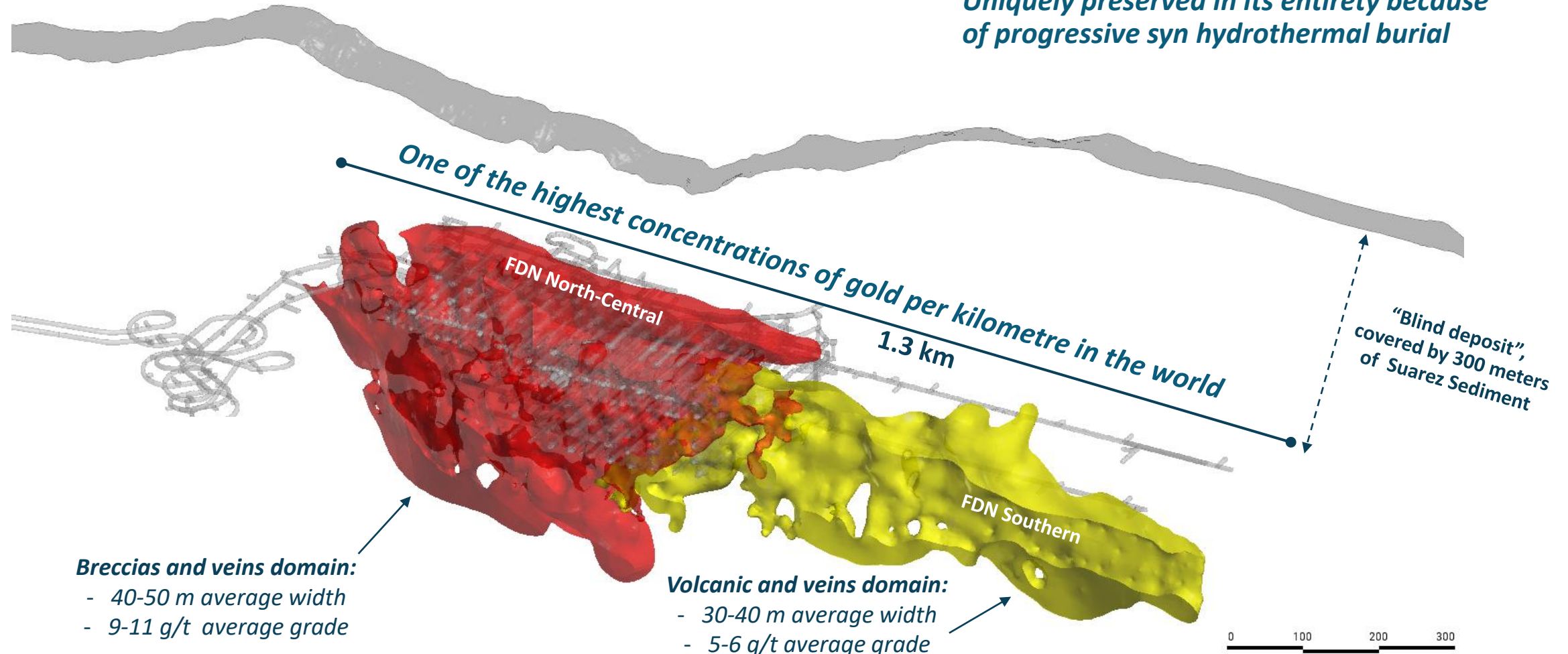
- › Rougher feed
 - Recovering fines ahead of traditional tank cell flotation
- › Cleaner feed
 - Recover fines ahead of cleaner circuit after regrind
- › Rougher tailings
 - Recover fines not captured in circuit previously

FRUTA DEL NORTE - A UNIQUE DEPOSIT

ONE OF THE PREMIER GOLD DISCOVERIES IN THE LAST 50 YEARS. LARGE MINERAL INVENTORY CONCENTRATED IN A SMALL VOLUME (1.3 KM LONG, 60 TO 160 M WIDE, 300 M HIGH SUBVERTICAL)

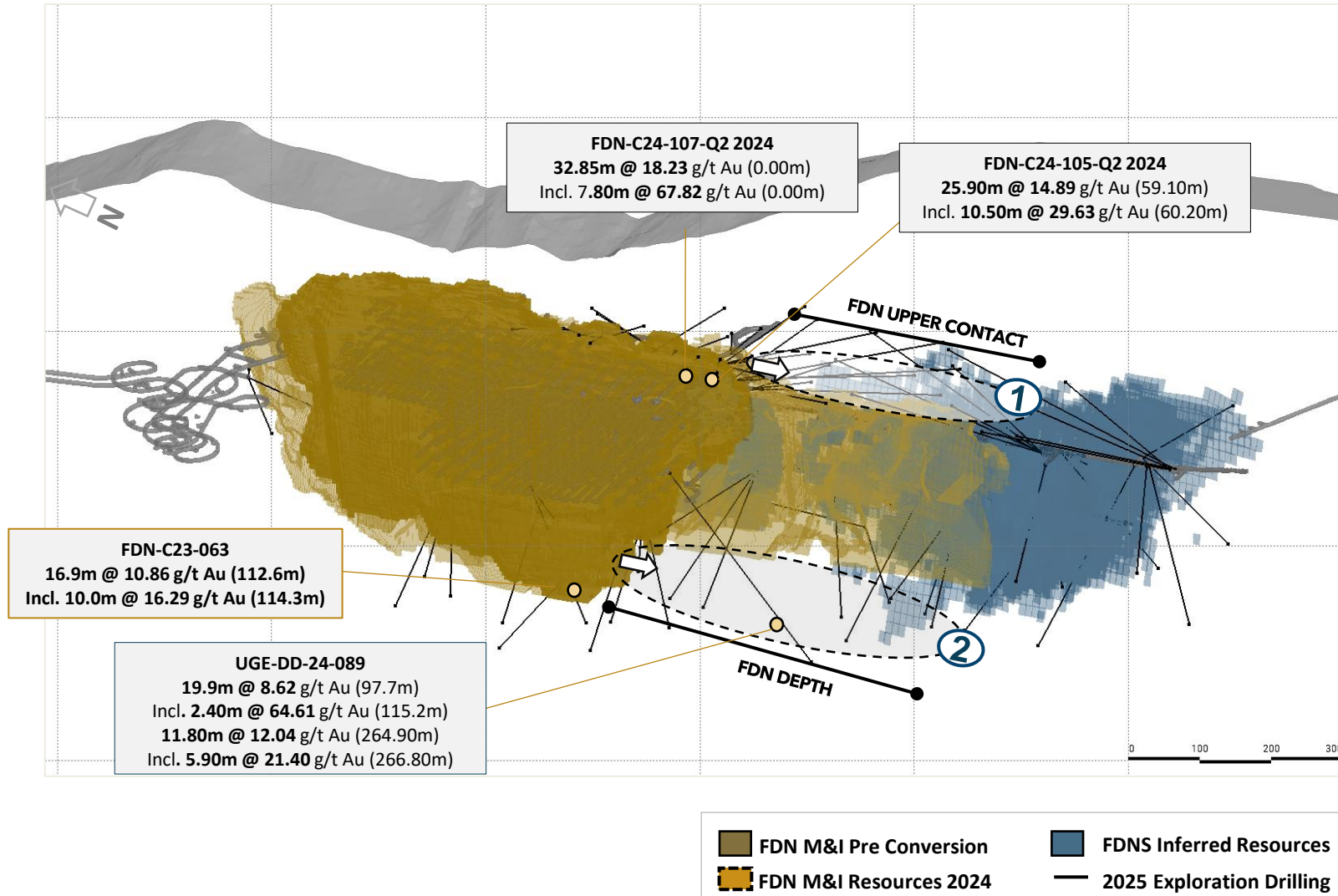


Uniquely preserved in its entirety because of progressive syn hydrothermal burial



NEAR-MINE PROGRAM

FDN EXTENSION



Additional area at FDN could provide additional resources in the short term

Upper Contact

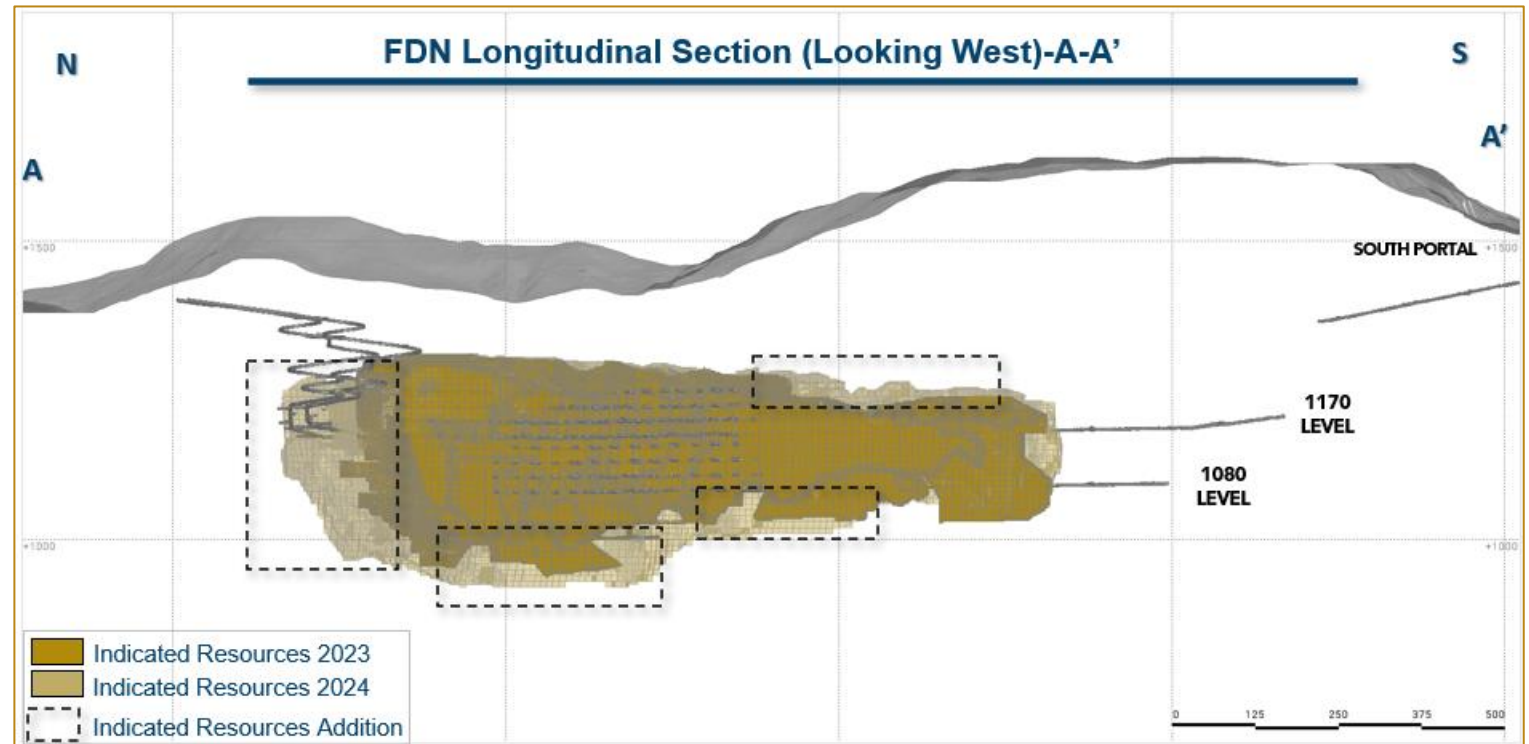
- › Continuity of the south strike along the upper contact

FDN Depth

- › Continuity of the south strike at depth

2024 MEASURED AND INDICATED RESOURCES JUST BEYOND THE RESERVE BOUNDARY

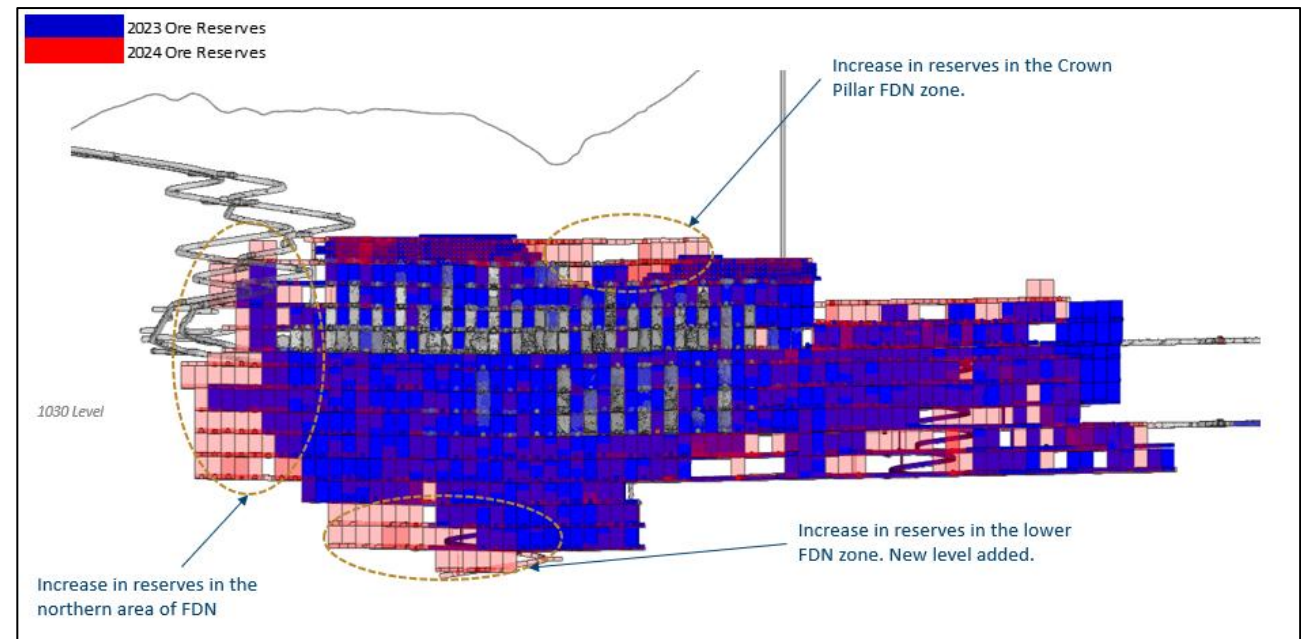
- The 2024 conversion drilling campaign was successful at reclassifying Inferred Resources to Indicated in areas immediately beyond the current Reserve boundary.
- The new areas of Indicated Resources include extensions to the north, at depth and to the south of the FDN deposit.



2024 MINERAL RESERVES MORE THAN OFFSET DEPLETION



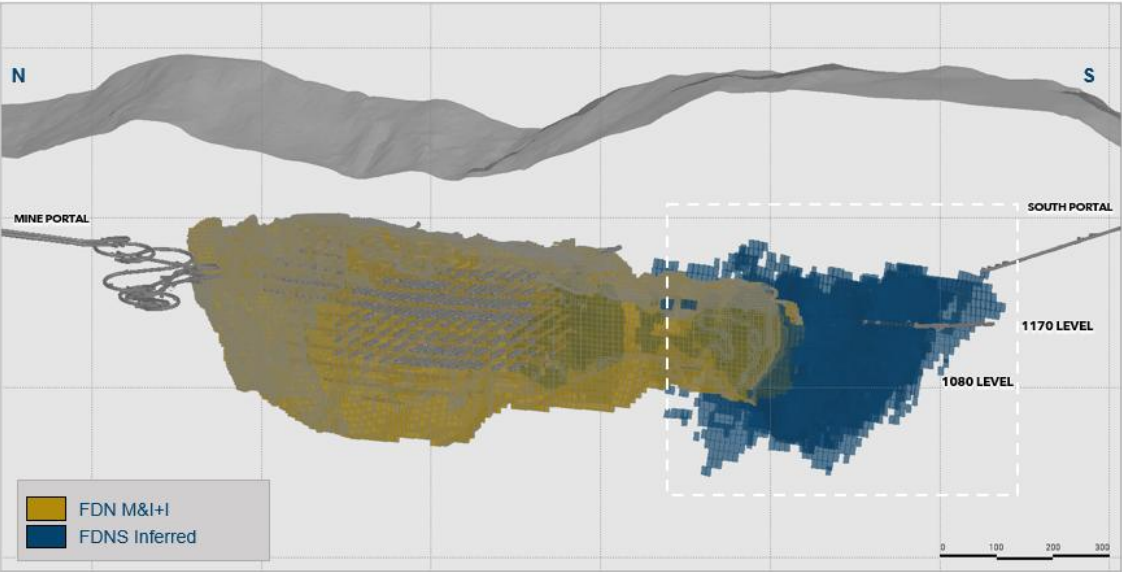
- Proven and Probable Mineral Reserves increased to 5.54 Moz of contained gold consisting of 22.06 Mt with an average grade of 7.81 g/t after mining depletion of 0.54 Moz.
- The addition of 2.03 Mt was achieved at a grade of 8.81 g/t which is higher than the average 2023 Mineral Reserve grade of 7.89 g/t.
- 2024 mining depletion of 1.67 Mt at 10.01 g/t.



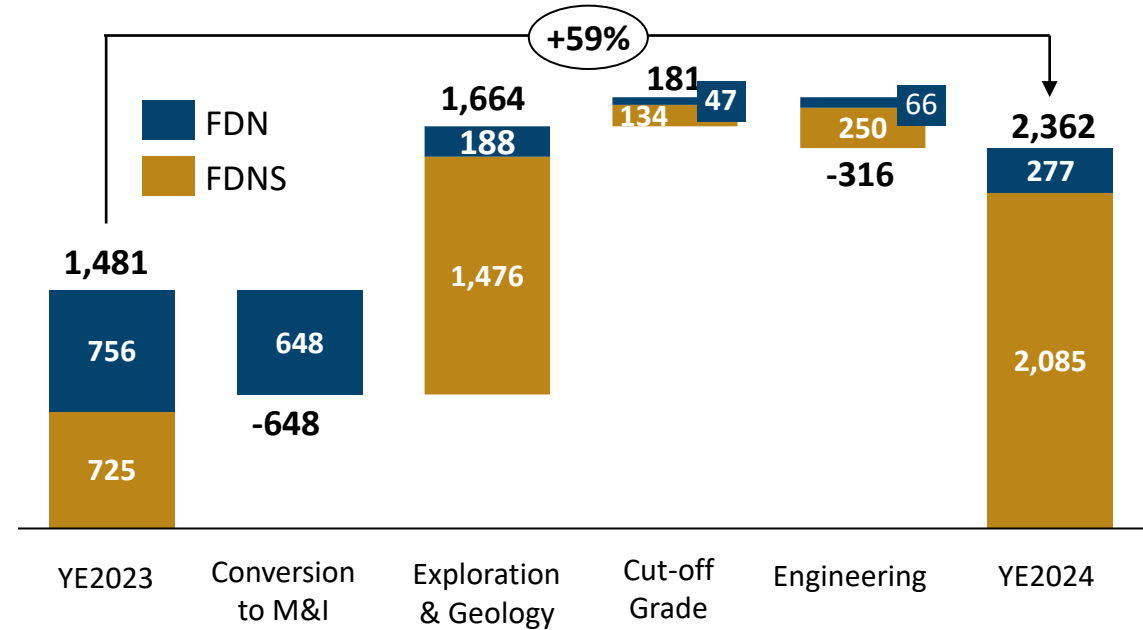
2024 INFERRED RESOURCES **FDNS A KEY GROWTH DRIVER**



- FDNS contributed 2.09 Moz to the Inferred Resource from 12.35 Mt with an average grade of 5.25 g/t.
- Majority of FDNS showing grades above 7 g/t.
- FDNS Inferred Resource will be a focus of the 2025 conversion drilling program.



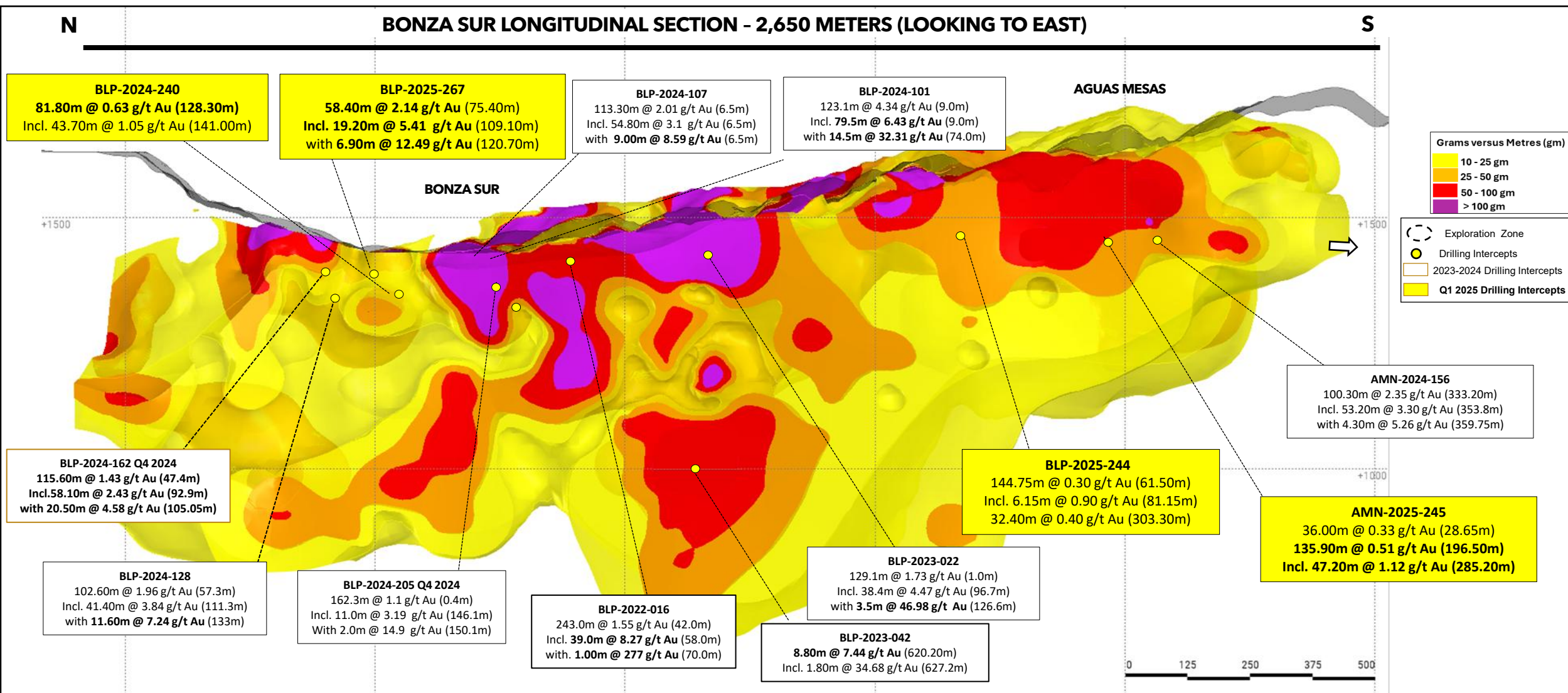
Cut-off Grade g/t	Tonnage kt	Grade (g/t Au)	Contained Metal (k oz Au)
3.0	12,347	5.25	2,085
4.0	8,498	6.07	1,659
4.5	6,748	6.54	1,419
5.0	5,113	7.11	1,169
5.5	3,636	7.86	919
6.0	2,656	8.64	737



NEAR-MINE PROGRAM

BONZA SUR - OPEN TO THE SOUTH

BONZA SUR LONGITUDINAL SECTION - 2,650 METERS (LOOKING TO EAST)



SUSTAINABILITY STRATEGY

2021-2025



Provides a framework for integrating sustainability principles into core operations by **engaging stakeholders, setting goals, focusing efforts and improving performance** in the areas that are most critical and that may present the greatest risk and/or opportunity to Lundin Gold.



ESG CONSIDERED IN EVERY ASPECT OF OUR ACTIVITIES

STRATEGIC PILLARS

Health & Safety

Zero fatalities and a total recordable incident rate (TRIR) of **0.66** over **7** million hours worked

Human Rights

18% female representation in the workforce / **26%** female management representation / Gender pay equality

Lasting Economic Opportunities

1,895 direct jobs (Zamora Chinchipe: 51%) / **\$28M** spent on local procurement - Zamora Chinchipe and **\$218M** in Ecuador)

Responsible Resource Governance

Leadership position within the Ecuador Chamber of Mines / **EITI Country Report 2022-2023** finalized / **\$853k** leveraged for local development programs / **14** visits to FDN and communities

* EITI: Extractive Industries Transparency Initiative



Climate Change

Industry **GHG** emissions (Scopes 1 and 2) intensity of **0.10 tCO₂e** per ounce of gold produced / climate adaptation planning underway

Community Infrastructure

191 Kms of rural road network is supported / **100%** Local communities near FDN have Internet access through WIFI hotspots.

Community Well-being

Achieved a **100%** graduation rate at the local high school with **59** graduates / Broad participation of children and youth in **education and healthy lifestyles** Extracurricular Programs.

Environmental Stewardship

Reduced water consumption to **197** litres/day/person at FDN / Reused **94%** of non-hazardous waste through recycling and reuse initiatives / Completed vulnerability analysis to guide conservation strategies for **three** key natural species in FDN



FDN BENEFITS FOR CENTRAL AND LOCAL GOVERNMENT



2024

Mining and Quarrying (includes oil industry) are the **4th largest** taxpayer's industry (out of 23)

Metallic mining (gold, copper, etc) is the **8th largest** taxpayer's economic activity (out of 91)

2024
Fiscal Year
Government
Benefits
\$272M

1
Income Tax
\$105 million



8
Other contributions
\$3.6 million



7
Social Security*
\$18 million



6
Yantzaza property tax
and quarry royalties
\$2.3 million



5
Net VAT paid on goods/services
\$10 million



4
Capital Outflow Tax
\$5.8 million



3



**Mining Royalties
Generated
\$59 million**

2



**Profit Sharing
12% Government
\$68 million**



SOCIOECONOMIC IMPACTS - LOS ENCUENTROS



SOCIOECONOMIC IMPACTS LOS ENCUENTROS



Economically Active Population - EAP

39% in 2015 vs 57% in 2021.



Employment

As of 2021, 91% of the EAP are employed and mostly linked to agricultural activities, followed by activities in the mining and trade sectors.



Education

Average Schooling: 8.2 years in 2015 vs 10.4 years in 2021 (population aged 15 and over).



Access to University

By 2021, the % of the population with higher education (university) more than doubled compared to 2015. It went from 4% to 9%.



Community Health

- In 2021, an ICU at the Yantzaza Hospital was inaugurated (first of the province).
- Access to drinking water: 47% in 2010 vs 72% in 2022.
- Garbage collection: 44% in 2010 vs 74% in 2022.



Poverty

Poverty (UBN) : 84% in 2010 vs 34% in 2021.



Community Infrastructure

- 16% of households with Internet access in 2015 vs 100% in 2024.
- Access to electricity: 84% in 2010 vs 97% in 2022.
- Sewerage: 35% in 2010 vs 49% in 2022.



Community Well-being

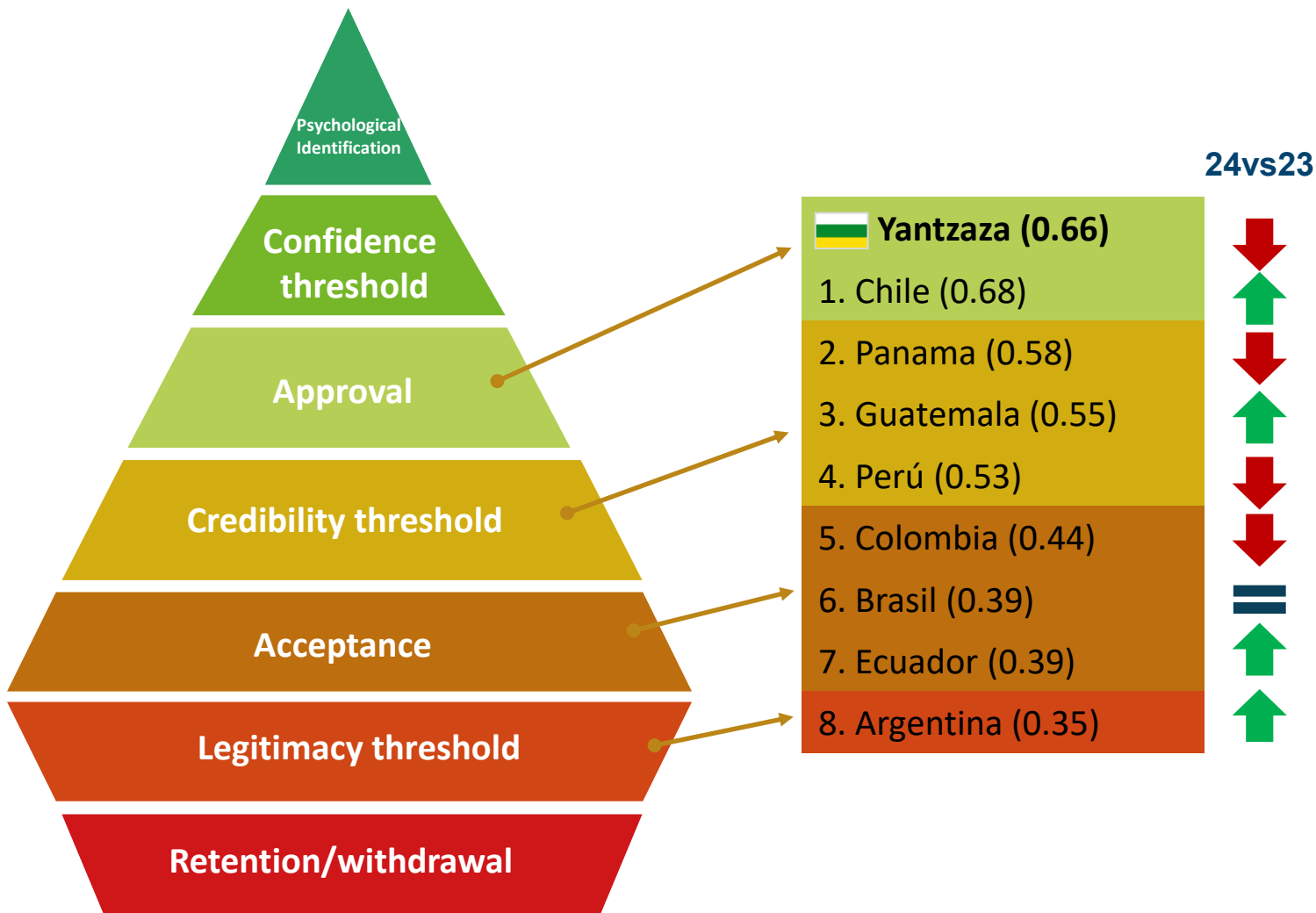
- 51% of all children and youth in Ring 1 are enrolled in extracurricular programs (2024).
- 71% of college/trade school graduates are formally employed or providing professional services upon graduation (2024).

Source: 2021 census implemented by Lundin Gold, signed agreements, public institutions data, 2010 and 2022 census by National Statistics Institution (INEC).



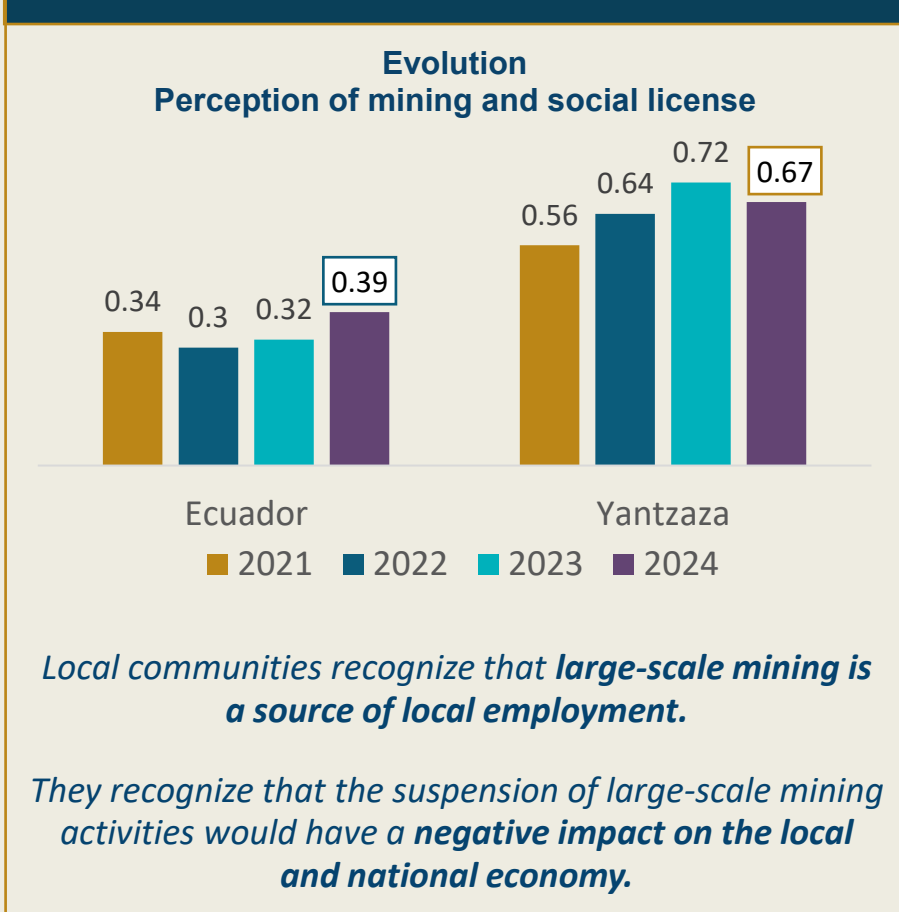
MINING PERCEPTION

MINING SOCIAL LICENCE TO OPERATE (SLO)



Source: Mining Compass Report, Public Opinion and Social License, 2024.

Evolution of the perception of mining in Ecuador and Yantzaza



Q2 2025 HIGHLIGHTS



	Production	<ul style="list-style-type: none">- Gold production of 139,433 oz, with 136,737 oz sold- Average grade of ore milled was 10.4 g/t with record average recovery at 90.9%- Mill processed 460,820 tonnes at a record throughput rate of 5,064 tpd
	Cash Operating Costs¹ and AISC¹	<ul style="list-style-type: none">- Cash operating costs¹ of \$756 per oz of gold sold- AISC¹ at \$927 per oz of gold sold at an AISC margin² of 72%
	Guidance	<ul style="list-style-type: none">- On track to increase throughput in Q3-Q4- Elevated lower end of 2025 production guidance from 475,000 to 490,000 oz and maintained the upper end at 525,000 oz- Cost expected to remain within the upper end of guidance at \$935 - \$995 AISC¹ per oz, despite impact of higher gold price
	Cash Flow	<ul style="list-style-type: none">- Generated record cash flow from operations of \$255 million and free cash flow¹ of \$236m- At the end of Q2, Lundin Gold had a cash balance of \$493m following quarterly and special dividend payments totalling \$207 million- Announced quarterly dividends of \$0.79 per share totalling ~\$190m to be paid out September 25
	Growth	<ul style="list-style-type: none">- Exciting exploration results across pipeline of targets. FDNS, FDN East, Trancaloma and newly discovered Sandia porphyry- Engineering studies on FDNS advancing to integrate FDNS into long-term mine plan

1. Please refer to page 12 in the Company's MD&A for the 6 months ended June 30, 2025 for an explanation of non-IFRS measures used

2. AISC Margin (%) calculated as average realized gold price less AISC, divided by average realized gold price.



Q2 2025 GROWTH AND MARGIN CAPTURE



Q2 2025 vs Q2 2024 Results

Revenue

\$453m

↑ Up 50%

Net Income

\$197m

↑ Up 65%

Adj. EBITDA¹

\$319m

↑ Up 63%

Adj. Free Cash Flow³

\$236m

↑ Up 110%

Earnings per Share

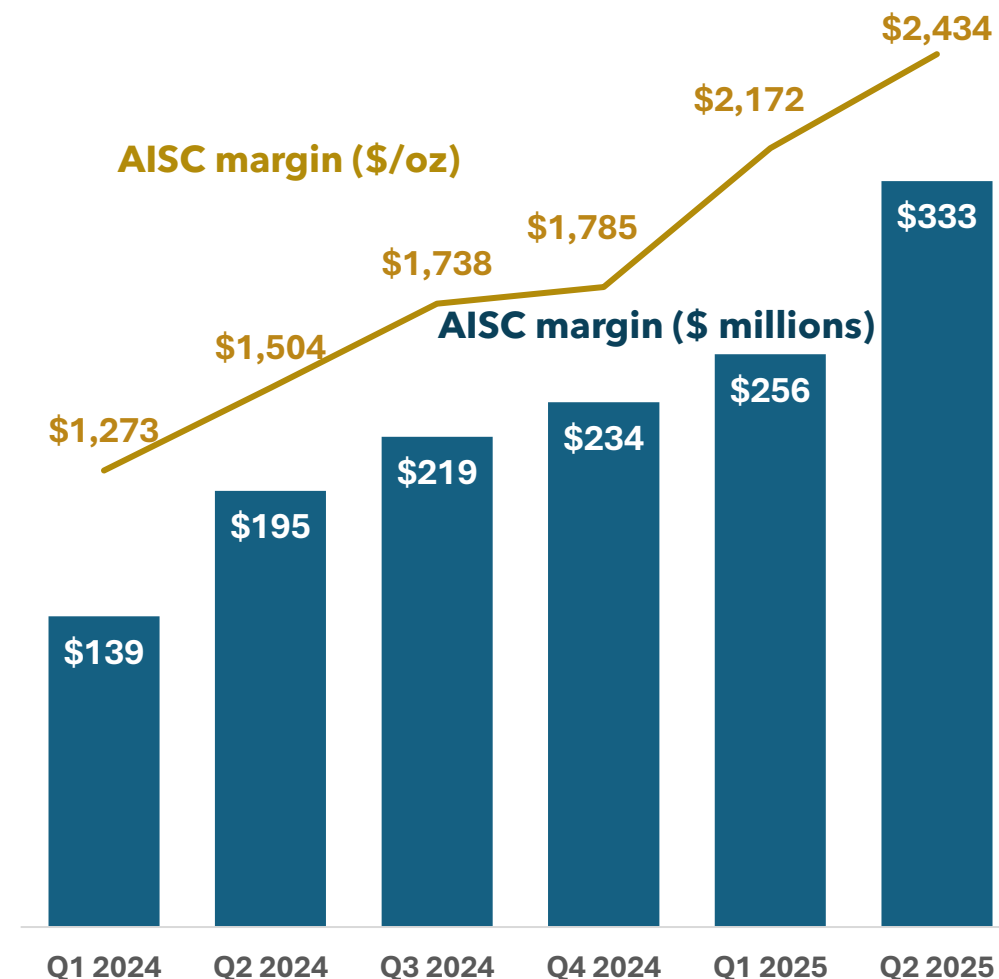
\$0.82

↑ Up 100%

AISC Margin² \$/oz

\$2,434

↑ Up 62%



1. Please refer to page 12 in the Company's MD&A for the 6 months ended June 30, 2025 for an explanation of non-IFRS measures used
2. AISC Margin (\$/oz) calculated as average realized gold price less AISC. AISC Margin (\$ millions) calculated as AISC Margin (\$/oz) multiplied by oz. sold
3. Adj. Free Cash Flow calculated as Free Cash Flow excluding the finance expense incurred upon buy out of the Stream Facility and Offtake in Q2 2024.



LUNDINGOLD

BUILDING A LEADING GOLD COMPANY
THROUGH RESPONSIBLE MINING

Contact information:

Brendan Creaney
VP Corporate Development and Investor Relations
Brendan.creaney@lundingold.com
+1 604-376-4595

 [Lundin Gold Ecuador](#)

 [LundinGold](#)

 [LundinGold](#)

 [@LundinGold / LundinGoldEC](#)

www.lundingold.com



Great Place To Work®
Certified
MAR 2024-MAR 2025
ECUADOR



TSX, Nasdaq Stockholm: LUG / OTCQX: LUGDF

